



## QUICK START GUIDE

# CNGE3FE8MS[POE][HO]

Environmentally Hardened Managed Ethernet Switch  
3 GE SFP + 8 FE Electrical Ports with Optional 30 or 60 Watt PoE

**This guide serves the following  
ComNet Model Numbers:**

CNGE3FE8MS  
CNGE3FE8MSPOE  
CNGE3FE8MSPOEHO

The ComNet CNGE3FE8MS[POE][HO] has three 100/1000Base-FX SFP ports and eight 10/100Base-T(X) ports. Two of the SFP ports support 2.5 Gbps SFPs for high speed communication in bandwidth intensive applications. All SFP ports utilize ComNet SFP modules for fiber and connector type and distance. The IEEE802.3-compliant unit offers multiple Ethernet redundancy protocols (MSTP/RSTP/STP/ERPS (G.8032)) which protect your applications from network interruptions or temporary malfunctions by redirecting transmission within the network. The switch provides advanced IP-based management that can limit the maximum bandwidth for each connected IP device, allowing the user to adjust usage. Two models are available which supply Power over Ethernet (PoE). The CNGE3FE8MSPOE model provides eight electrical ports supporting up to thirty watts of power. On the CNGE3FE8MSPOEHO model, four of the eight PoE ports can support up to sixty watts of PoE power. All PoE ports are IEEE802.3at compliant.

## Contents

<b>Regulatory Compliance Statement</b>	<b>3</b>
<b>Warranty</b>	<b>3</b>
<b>Disclaimer</b>	<b>3</b>
<b>Safety Information</b>	<b>3</b>
<b>Hardware Installation</b>	<b>4</b>
Installing the Switch on DIN-Rail	4
Wall Mounting Installation	6
<b>Hardware Overview</b>	<b>7</b>
Front Panel LEDs	8
<b>WEB Management</b>	<b>8</b>

## Regulatory Compliance Statement

Product(s) associated with this publication complies/comply with all applicable regulations. Please refer to the Technical Specifications section for more details.

## Warranty

ComNet warrants that all ComNet products are free from defects in material and workmanship for a specified warranty period from the invoice date for the life of the installation. ComNet will repair or replace products found by ComNet to be defective within this warranty period, with shipment expenses apportioned by ComNet and the distributor. This warranty does not cover product modifications or repairs done by persons other than ComNet-approved personnel, and this warranty does not apply to ComNet products that are misused, abused, improperly installed, or damaged by accidents.

Please refer to the Technical Specifications section for the actual warranty period(s) of the product(s) associated with this publication.

## Disclaimer

Information in this publication is intended to be accurate. ComNet shall not be responsible for its use or infringements on third-parties as a result of its use. There may occasionally be unintentional errors on this publication. ComNet reserves the right to revise the contents of this publication without notice.

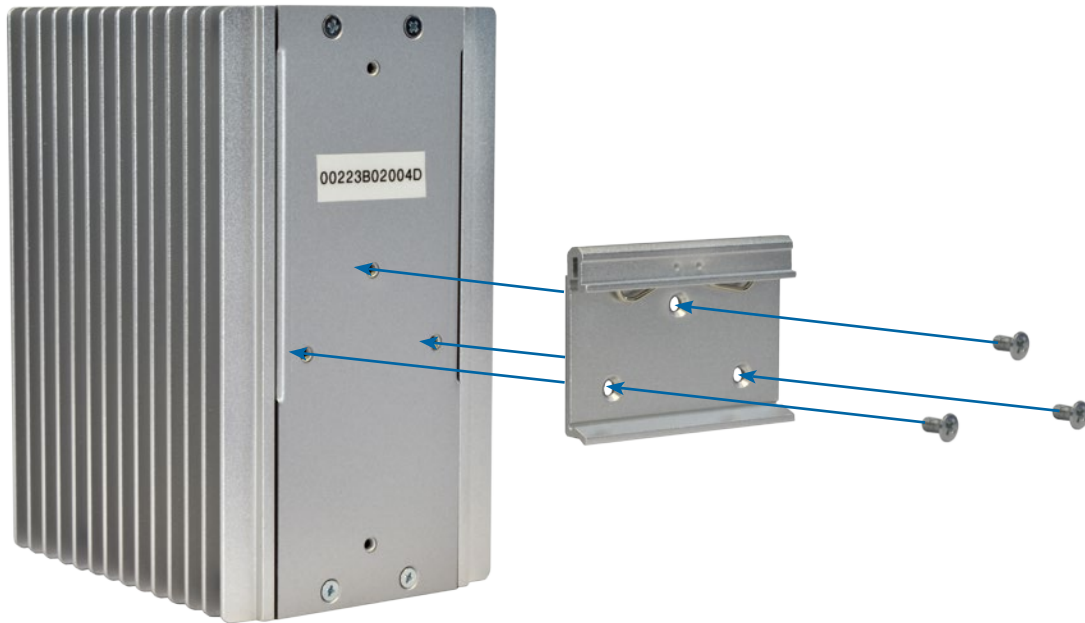
## Safety Information

- » Only ComNet service personnel can service the equipment. Please contact ComNet Technical Support.
- » The equipment should be installed in locations with controlled access, or other means of security, and controlled by persons of authority.

## Hardware Installation

### Installing the Switch on DIN-Rail

Each switch has a Din-Rail kit on the rear panel. The DIN-Rail kit affixes the switch to the DIN-Rail.



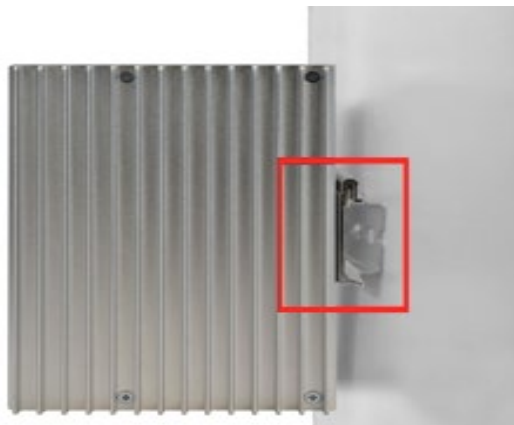
It is easy to install the switch on the Din-Rail:

**Mount Series on DIN-Rail**

Step 1: Tilt the switch and mount the metal spring to DIN-Rail.



Step 2: Push the switch toward the DIN-Rail until you hear the spring snap into place



## Wall Mounting Installation

Each switch has another installation method for users to fix the switch. A wall mount panel can be found in the package. The following steps show how to mount the switch on the wall:

### Mounting the CNGE3FE8MS on a Wall

Step 1: Remove DIN-Rail kit if it is installed.

Step 2: Remove the two screws at the top of the unit's back panel. Remove only one pair of back panel screws at time (these hold the back panel in place on the unit).

Step 3: Use the same two screws plus one of the included screws to attach the wall mount panel to the top set of screw holes as shown in the diagram below.

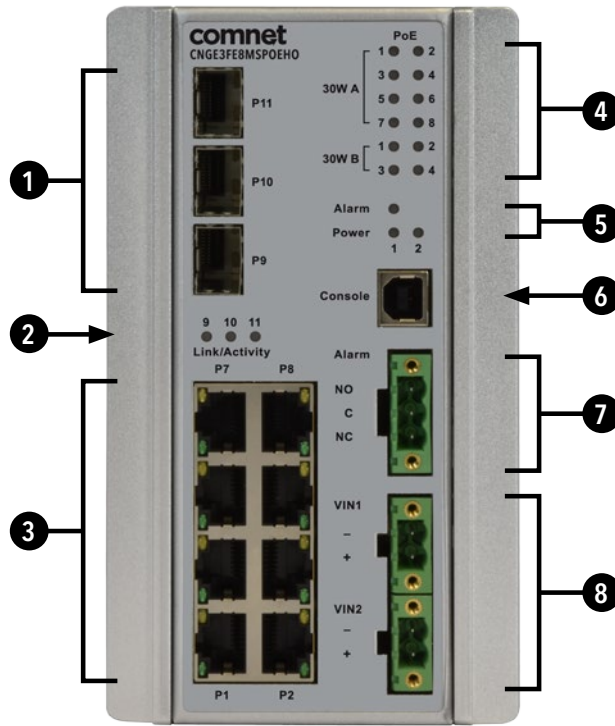


Step 4: Repeat Steps 2 and 3 to mount the second wall mount panel on the bottom of the unit's back panel.

**ATTENTION: Do not remove the top and bottom panel screws at the same time, or the back panel will detach from the unit. Install the wall mount panels one at a time.**

In order to prevent switches from being damaged, the screws should match the size screws that comes pre-installed in the CNGE3FE8MS switch (M3 × 8 mm).

# Hardware Overview



CNGE3FE8MS

Call-out	Description
1	3 × 100/1000Base-FX SFP Ports
2	Link/Activity LED Indicators for SFP Ports
3	8 × 10/100Base-T(X) RJ45 IEEE802.3at compliant PoE+ Ports
4	PoE LED Indicators
5	Alarm and Power Fault LED Indicators
6	USB Console Port
7	Fault Relay 3-Pin Terminal Block Connector
8	Redundant Power 2-Pin Terminal Block Connectors

## Front Panel LEDs

LED	Color	Status	Description
Power	Green	On	System power connected correctly
Alarm	Red	On	Alarm Fault Status has been triggered
Power 1 Alarm	Green	On	Power lost to VIN1 terminal block
Power 2 Alarm	Green	On	Power lost to VIN2 terminal block
PoE (Power over Ethernet)			
30W A	Green	On	MODE A PoE is being supplied on indicated RJ-45 port
30W B	Green	On	MODE B PoE is being supplied on indicated RJ-45 port
Gigabit Ethernet ports			
LNK/ACT	Green	Blinking	Data transmitted.
Full Duplex	Amber	On	Port in Full Duplex mode
Gigabit SFP ports			
Link/Activity	Green	Blinking	Data transmitted.
		On	Port link up.

## WEB Management

**Attention: While installing and upgrading firmware, please remove physical loop connection first. DO NOT power off equipment while the firmware is upgrading!**

### Configuration by Web Browser

#### About Web-based Management

An embedded HTML web site resides in the flash memory on the CPU board. It contains advanced management features and allows you to manage the switch from anywhere on the network through a standard web browser such as Microsoft Internet Explorer.

The Web-Based Management function supports Internet Explorer 5.0 or later. It is based on Java Applets with an aim to reduce network bandwidth consumption, enhance access speed and present an easy viewing screen.

**Note: By default, IE5.0 or later version does not allow Java Applets to open sockets. You need to explicitly modify the browser setting in order to enable Java Applets to use network ports.**

#### Preparing for Web Management

The default value is as below:

IP Address: **192.168.10.1**

Subnet Mask: **255.255.255.0**

Default Gateway: **192.168.10.254**

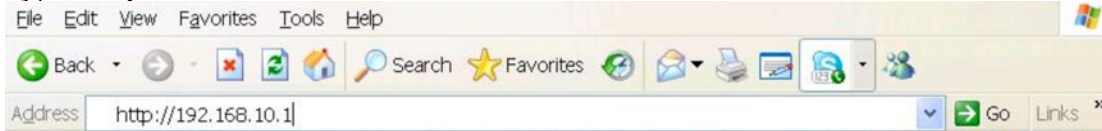
User Name: **admin**



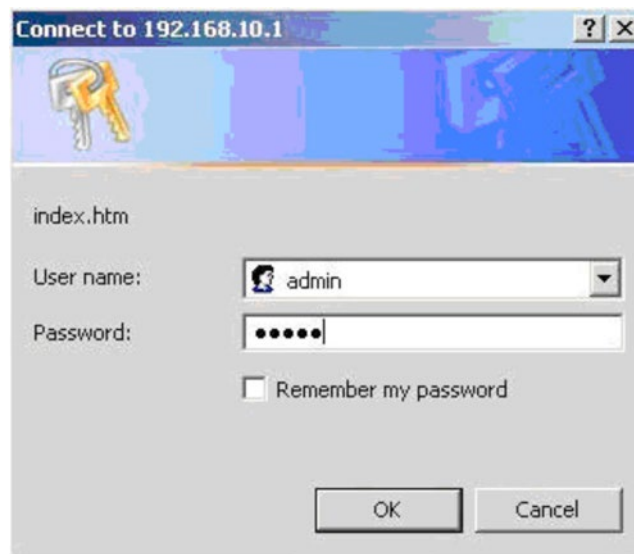
Password: **admin**

## System Login

1. Launch Internet Explorer.
2. Type **http://192.168.10.1**. Press **Enter**.



3. The login screen appears.
4. Key in the username and password. The default username and password is **admin**.
5. Select **Enter** or **OK** button, then the main interface of the Web-based management appears.



*Login screen*

## MECHANICAL INSTALLATION INSTRUCTIONS

### ComNet Customer Service

Customer Care is ComNet Technology's global service center, where our professional staff is ready to answer your questions at any time.

Email ComNet Global Service Center: [customer care@comnet.net](mailto:customer care@comnet.net)



3 CORPORATE DRIVE | DANBURY, CT 06810 | USA

T: 203.796.5300 | F: 203.796.5303 | TECH SUPPORT: 1.888.678.9427 | [INFO@COMNET.NET](mailto:INFO@COMNET.NET)

8 TURNBERRY PARK ROAD | GILDERSOME | MORLEY | LEEDS, UK LS27 7LE

T: +44 (0)113 307 6400 | F: +44 (0)113 253 7462 | [INFO-EUROPE@COMNET.NET](mailto:INFO-EUROPE@COMNET.NET)