

## MAXPRO® NVR XE (Xpress Edition)

### ENTRY LEVEL NETWORK VIDEO RECORDER (NVR)

Honeywell's MAXPRO® NVR XE is an ideal solution for entry into IP video surveillance systems. MAXPRO NVR XE utilises Honeywell's HD cameras to offer a powerful high definition IP recording and security monitoring system for small installations. MAXPRO NVR XE has an open platform with broad integration with third party IP cameras and encoders. MAXPRO NVR XE offers the advantage of HD quality IP video but is as easy as a DVR to setup and operate for a seamless transition from analogue to IP.

MAXPRO NVR XE is an open platform and supports broad third party device integrations with support for standards—PSIA and ONVIF (including Profile-S devices), real time streaming protocol (RTSP) standard and native device integrations including 360° camera support. MAXPRO NVR XE provides easy to use desktop clients, web client and mobile apps—MAXPRO® Mobile. The Web Client is supported from any standard Mac or PC browser and requires no additional install, provides the value of reduced setup, maintenance and improved compatibility. The interface is simple and intuitive with all the functionality and features that users need for daily surveillance operations, such as live view and playback of recorded video.

MAXPRO NVR XE comes pre-installed with all required software and is also pre-licensed for 8 or 18 channels allowing up to 8 or 18 cameras to be added anytime later as your system grows. This, along with an easy 3-Click\* wizard to live video for auto configuration, makes installing an IP system quick and efficient without requiring any IT expertise. Simple and logical configuration pages make setup a breeze even for the novice installer.

The MAXPRO NVR XE user interface is based on Honeywell's flagship MAXPRO® VMS user interface which offers a feature rich user experience and is common across the MAXPRO NVR Family. Utilisation of this familiar interface allows for the "Learn One, Know Them All" concept that ensures familiarity across a broad range of Honeywell products, saving training costs.

MAXPRO NVR XE supports simultaneous recording, live monitoring search and system management for up to 8 or 16 IP cameras including high definition formats. Multiple MAXPRO NVRs can be deployed for system expansion using a distributed architecture and integrated with the MAXPRO® Viewer multi-site software or MAXPRO® VMS enterprise video management system.

MAXPRO NVR XE utilises powerful processor and memory technology supporting multiple simultaneous operations such as video recording and video viewing or alarm monitoring on the unit itself without the need for an additional workstation. It also supports remote monitoring. End users can view live video while simultaneously performing searches.

MAXPRO NVR XE also offers advanced features useful to entry level customers. Honeywell's patented Video Surround feature provides the ability to track subjects of interest as they move between areas covered by adjacent cameras by simply double-clicking on the panel where the subject is currently visible. Features such as the powerful calendar, preview search options and film strip view allow for rapidly searching video for scenes of interest and then quick export method transfers video to an authenticated video clip playable through Windows Media player.

\*With default settings and in a local area network

#### Market Opportunities

The continual growth of cost-effective IP networks and the demand for HD video offered by IP cameras have led to the need for entry level IP surveillance solutions. This has resulted in a strong demand for an all-IP end-to-end security system deployment. MAXPRO NVR XE provides an easy entry into IP-based systems and the operational power to address the needs of a wide variety of applications including healthcare clinics, small commercial and retail, property management and many other applications. When the need is for an easy to install, simple to use, and feature rich entry level network video recorder, the solution is MAXPRO NVR XE.

#### Key Benefits

- As easy to install and operate as a DVR – no IT expertise required
- Reduced security threats with HD quality video
- Quick to install – 3-Clicks to Live Video
- Local display – no PC needed
- Open – support for PSIA, ONVIF (including Profile S devices), RTSP standards and native device integrations
- Low cable cost – no homeruns of cable from camera to unit



HD



# MAXPRO® NVR XE (Xpress Edition)

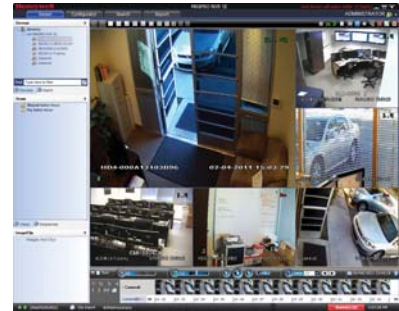
## FEATURES

### Software

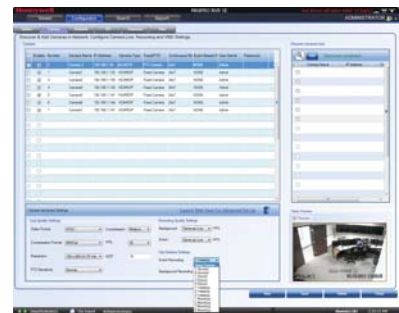
- MAXPRO NVR XE allows local or remote operations including live and recorded video monitoring, configuration and system management in a single desktop client interface.
- Support for Web Client on Windows PC (Internet Explorer, Chrome and Firefox browsers) and Mac (Safari browser). Supports live, playback/search of recorded video for up to 1080p resolution on all cameras, taking snapshots and viewing pre-sets for PTZ
- Support for mobile monitoring clients on iOS and Android with MAXPRO Mobile apps.
- Broad device integrations: Honeywell cameras and encoders, third party devices with support for standards—PSIA and ONVIF (including Profile-S devices), RTSP standard and native device integration including 360° camera support.
- Feature-rich, user-friendly Windows based interface to view HD video and configure system settings.
- Easy 3-click\* wizard to set up the system with auto-configuration and auto-discovery of IP cameras, recording and monitoring configuration—without any IP video expertise.
- Multi-zoom views on HD video. Example: Zoom in on a cash register in one view of the HD camera while at the same time monitoring the cash operator in the zoom out view of the HD camera.
- Ability to investigate events and alarms by simultaneously viewing alarm videos at various stages. For every alarm, users can view the video captured during pre-alarm, on-alarm, and post-alarm, and also view live video from the camera which triggered the alarm.
- Enriched video viewing experience through the intuitive video rendering engine that optimises CPU utilisation by altering the video frame rate.
- Honeywell's patented Video Surround feature simplifies the process of tracking subjects through a set of surrounding cameras.
- Create, save and name salvos under My Salvos or Shared Salvos.
- IP PTZ control and digital zoom on fixed cameras. 360° immersive viewing experience providing heightened situational awareness and increased video surveillance coverage.
- Fast search by date/time, time line, time jump, bookmarks, calendar, preview, film strip view and events. Increase productivity with more efficient search/investigation: Get to the relevant video in few clicks without having to review hours of recordings.
- Event history and operator log reporting with export in .pdf, Crystal Reports, Excel or Word.
- Capture and export clips and still images in simple .wmv and .bmp formats.
- Clips signed with digital signature for authentication.
- Supports multiple client connection to NVR Server.
- Separate event video and general recorded video retention times.
- Email notification on camera, system and operator events.
- Role-based operator privileges supporting Windows and local users.
- Flexible Motion detection (VMD) options with Server (Smart VMD) or Camera based motion events support. Reduced false alarms with object based motion detection analytics with Smart VMD.
- Advanced security features with encryption support for communication between desktop client to NVR and secure https login for Web Client.
- Keyboard control with UltraKey Plus and UltraKey Lite over Ethernet.
- Local and multi-language support.
- Multi-site support with MAXPRO Viewer.
- Integration with MAXPRO VMS.
- Integration with WIN-PAK® and Pro-Watch® Access Control Systems.

### Hardware

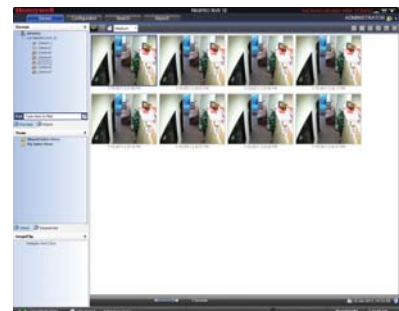
- Each unit records and monitors up to 8 or 16 cameras at 480 fps @ 4CIF/VGA or 480 fps @ 720p HD or 400 fps @ 1080p HD. Monitoring of 1080p and higher resolution cameras is only supported on remote clients. Network bandwidth/throughput supported per NVR with Incoming: 65 Mbps, Outgoing: 65 Mbps providing a Total: 130 Mbps.
- Supports One-Way Audio (for specific IP cameras) with live and playback on desktop clients for up to 8 or 16 IP channels.
- Includes HDMI, VGA, DVI-D and Display ports for single local monitor support providing access to monitoring and configuration interface (supports HD resolution)
- Supports displaying 16 cameras at one time on the NVR local monitor
- Internal storage capacity of 1 TB/2 TB/3 TB – Video rated HDD
- DVD R/W drive for burning evidence clips. Includes dual 1 GB Network ports optimized to separate record and viewing data to ensure 100% recording and smooth playback even with multiple client connections
- Small desktop type footprint suitable for small spaces



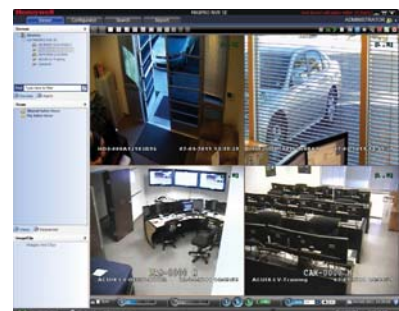
6 Split



Event Record



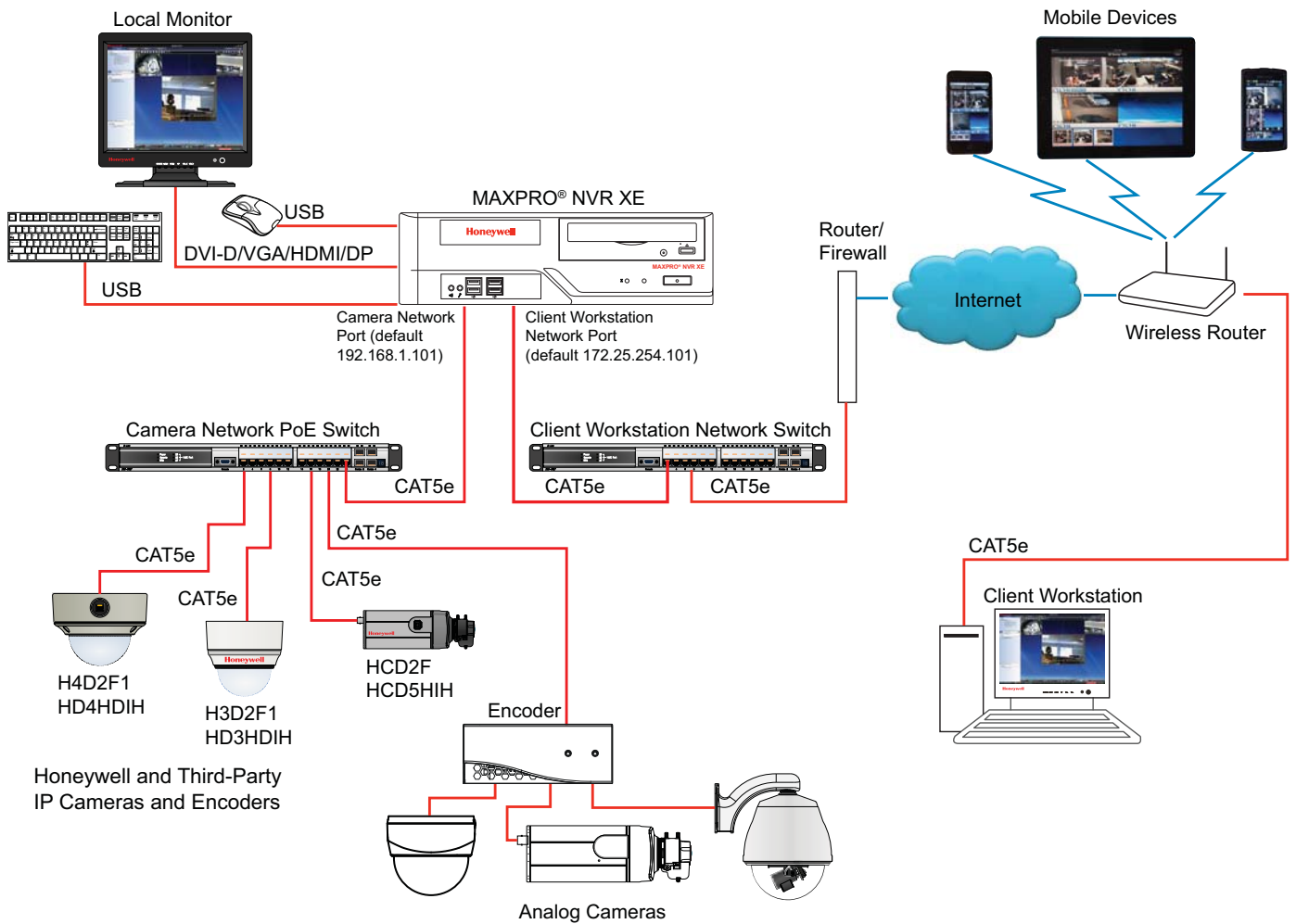
Preview



Quad

# MAXPRO® NVR XE (Xpress Edition)

## SYSTEM DIAGRAM



# MAXPRO® NVR XE (Xpress Edition)

## SPECIFICATIONS

Operational		Operational	
<b>MAXPRO NVR XE Software - Version 3.1 or above</b>		<b>MAXPRO NVR XE Hardware</b>	
Database	Microsoft SQL Express 2008 R2	Processor	Intel® Core™ i5-4440 3.1 GHz
Operating system	Windows Embedded Standard 7 SP1 64bit	Memory	8 GB
Image compressions supported	MPEG-4, H.264	Power supply	Single 300W 88% Efficient PSU; Energy Star 5.0 compliant, Active PFC
Supported Honeywell IP cameras and encoders	Supports Performance Series IP, equlP® Series cameras including high definition. Refer to <a href="http://www.honeywellsecurity.com/hota">www.honeywellsecurity.com/hota</a>	Storage capacities	1 TB, 2 TB or 3 TB
Supported third party IP cameras and encoders	Refer to the Honeywell Open Technology Alliance for a comprehensive list of compatible products to which this device is integrated. <a href="http://www.honeywellsecurity.com/hota">www.honeywellsecurity.com/hota</a>	Optical	16X DVD-RW
Maximum number of desktop client connections	8 remote per unit from 4 remote workstations +1 local on NVR server	Network	Two 1 Gigabit Ethernet
Salvo layouts	Full, 2x2, 1x5, 3x3, 2x8, 1x12, 4x4. Web Client - 2x2, 1x1, 1x2, 1x3	Mouse and keyboard	USB
Picture controls per camera	Sharpness, blur, brightness, contrast, hue, saturation, maintain aspect ratio, stretched, original size and picture mirror	<b>Rear Panel Connections</b>	
OSD	Concealed text option	USB	4 Front USB 2.0 ports 4 Rear USB 2.0 ports
Playback controls per camera	FWD/REV Play x (1, 2, 4, 8, 16) Slow FWD/REV Play x (1/2, 1/4, 1/8)	Network	2x RJ45
Search types	Time/date timeline, time jump FWD/REV, bookmarks, calendar preview, film strip and event search	Monitor output	Single monitor support-1 HDMI, 1 VGA, 1 DVI-D, 1 Display port
Recording schedule	Constant and event based with H/M/D and holiday and exception days	<b>Electrical</b>	
Recording methods per camera	Constant, event-based and user activated	Input voltage	100- 240 VAC, 60/50 Hz
Live settings per camera	Compression format, resolution and frame rate	Operating voltage	110/220 VAC 60/50 Hz
Recording settings per camera	Same as live or reduced frame rate	Power consumption	300 W
Clip format	WMV with digital certificate for authentication playable with Windows media player	<b>Mechanical</b>	
Video clip authentication	Digital signature, verification tool provided	Dimensions (w x h x d)	13.00" x 3.78" x 15.66" 330.0 mm x 96.0 mm x 397.8 mm
Motion detection location	Camera based for supported models or Server based (Smart VMD) for all models (except 360 fisheye/panomorph views)	Weight	Shipping: 23 lbs (10 kg)
Event recording	Pre- and post-duration setting	<b>Environmental</b>	
Operator reporting	Per user, configurator, session and viewer	Operating Temperature	5°C to 40°C
Event report	Per camera or recorder events	Storage Temperature	-10°C to 65°C
Operators	1024	Relative Humidity	0% to 90% (non-condensing)
<b>Recording and Monitoring Performance</b>		<b>Regulatory</b>	
	480 fps @ 4CIF/VGA or 480 fps @720p HD or 400 fps @ 1080p HD. 1-way audio for up to 8 or 16 IP channels. Network bandwidth/throughput supported per NVR with Incoming: 65 Mbps, Outgoing: 65 Mbps providing a Total: 130 Mbps.	Emissions	FCC: Part 15 Class B, Subpart B; EN55022:2010
Max Video Streams Support	Web Client: Total Streams Limit - 32 (live + playback). Note: Live streams consumed are per camera being viewed live and duplicate live views of the same camera in multiple or same web client instance are allowed without consuming additional streams. Playback streams consumed are per playback stream being viewed and each playback stream being viewed consumes 1 additional stream. Desktop Client: Live - 160 streams, Playback/Video retrieval sessions - 32, Sync playback - 9 streams	Immunity	EN50130-4:2011
Server based VMD (Smart VMD) performance - channels supported	All 8 or 16 channels supported at 480 fps @ 4CIF/VGA or 480 fps @ 720p HD or 400 fps @ 1080p HD. <b>Note:</b> Local client - 4x4 view for 1080p or lower resolutions.	Safety	ANSI/UL 60950-1; CAN/CSA C22.2 60950-1; EN60950-1:2006+A11:2009+A12:2011 +A1:2010
		<b>Warranty</b>	
		Warranty and Advanced Replacements	Refer to <a href="http://www.honeywellvideo.com/support/warranty/index.html">http://www.honeywellvideo.com/support/warranty/index.html</a>

# MAXPRO® NVR XE (Xpress Edition)

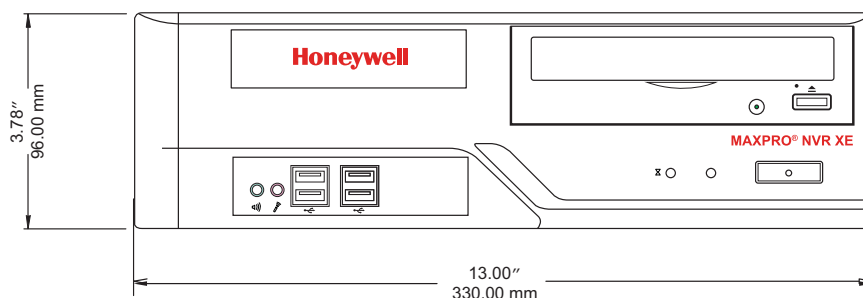
## SPECIFICATIONS

MAXPRO NVR Client Only Workstation – Minimum Specifications	
Processor	Intel® Core™ 2 Duo Processor E6750 2.66 GHz or Quad Core Intel® Xeon® E5405 2.0 GHz
System Memory (RAM)	Minimum 4 GB or Higher
OS & Application – Hard Disk Drive or Partition	Minimum 100 GB Partition drive or separate hard drive
Graphics Adapter	512 MB or higher Display Card for Dual Monitor – DirectX 9 Compatible
Network Interface	Minimum – 1 Gigabit network interface card
Optical Drive	DVD-RW
Monitor Resolution	Video resolution 1280x1024 pixels, 32 bit
Keyboard/Mouse	102-key keyboard and mouse
Operating System Options	Microsoft® Windows 7 Professional SP1 (32-bit and 64-bit), Microsoft® Windows Server 2008 R2 SP1

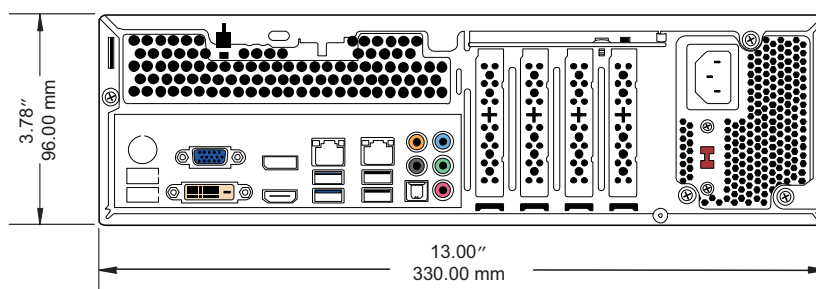
**Note:** The minimum specifications above are recommended for systems with fixed or PTZ cameras only. For systems with multiple 360 cameras using full immersive experience with dewarping and playback requires superior workstation specifications than above.

## SYSTEM DIMENSIONS

Front View



Rear View



# MAXPRO® NVR XE (Xpress Edition)

## ORDERING

MAXPRO NVR XE	
HNMXE08B01TX	MAXPRO NVR XE, Rev B, 8 Channel, 1 TB
HNMXE08B02TX	MAXPRO NVR XE, Rev B, 8 Channel, 2 TB
HNMXE08B03TX	MAXPRO NVR XE, Rev B, 8 Channel, 3 TB
HNMXE16B01TX	MAXPRO NVR XE, Rev B, 16 Channel, 1 TB
HNMXE16B02TX	MAXPRO NVR XE, Rev B, 16 Channel, 2 TB
HNMXE16B03TX	MAXPRO NVR XE, Rev B, 16 Channel, 3 TB
Recommended Entry Level Cameras: Performance Series IP Cameras	
HD44IPX, H3SVP1X	Network, Day/Night Indoor Fixed IP Dome, VGA Resolution Camera, H.264, PSIA Compliant
HD45IPX, H3S1P1X	Network, Day/Night Indoor Fixed IP Dome, 720p Resolution Camera, H.264, PSIA Compliant
HD54IPX, H4SVP1X	Network, Day/Night Rugged Fixed IP Dome, VGA Resolution Camera, H.264, PSIA Compliant
HD55IPX, H4S1P1X	Network, Day/Night Rugged Fixed IP Dome, 720p Resolution Camera, H.264, PSIA Compliant

**NOTE:** Honeywell reserves the right, without notification, to make changes in product design or specifications.



All other company names and products are trade names, trademarks or registered trademarks of their respective companies.

### For additional information,

[www.honeywell.com/sites/me/](http://www.honeywell.com/sites/me/)

[Honeywellsecurity.marketing@honeywell.com](mailto:Honeywellsecurity.marketing@honeywell.com)

### Honeywell Security Group

Emaar Business Park, Sheikh Zayed Road

Building No. 2, 3rd Floor, Office No. 301

PO Box 232362

Dubai

United Arab Emirates

Tel: +971-4-454-1719 / +971-4-454-1701

Fax: +971 4 450 5900

[www.honeywell.com](http://www.honeywell.com)

HVS-NVRXE-05-ME(0414)DS-E

April 2014

© 2014 Honeywell International Inc.

# Honeywell