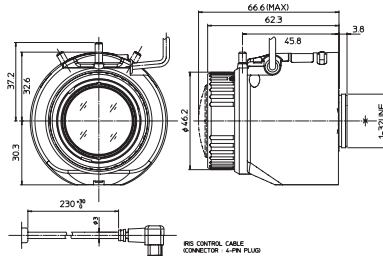


6MP

DV2.2x4.1SR4A-SA2L

Applicable camera (model) 1 2/3 1/1.8 1/2 1/3 1/4

Applicable to 1/1.8



Unit : mm

Day Night

Fuji HD 6MP

- Vari-Focal
- Wide Angle
- DC Auto Iris
- C Mount
- Metal Mount
- ND Filter
- Long Cable
- Aspherical Lens
- Large Aperture Ratio
- RoHS Compliant

Focal Length (mm)	4.1 - 9 (2.2x)		
Iris Range	F1.6 - T360		
Operation	Zoom Manual		
	Focus Manual		
Angle of View (H x V)	Iris	Auto (DC type)	
	1/1.8"	WIDE	100° 11' x 74° 21'
		TELE	45° 17' x 33° 59'
	1/2"	WIDE	89° 33' x 66° 42'
		TELE	40° 43' x 30° 34'
	1/3"	WIDE	66° 42' x 49° 50'
		TELE	30° 34' x 22° 56'
	1/4"	WIDE	49° 50' x 37° 18'
TELE		22° 56' x 17° 12'	
Angle of View (H x V)	1/1.8"	WIDE	109° 23' x 60° 32'
	1/2"	WIDE	49° 18' x 27° 47'
		TELE	97° 52' x 54° 20'
	1/3"	WIDE	44° 21' x 24° 59'
TELE		72° 47' x 40° 39'	
Aspect Ratio 16:9	1/3"	WIDE	31° 17' x 18° 44'
	1/4"	TELE	54° 20' x 30° 27'
Focus Range (From the Lens Front) (m)	∞ - 0.3m		
Mass (g)	135		

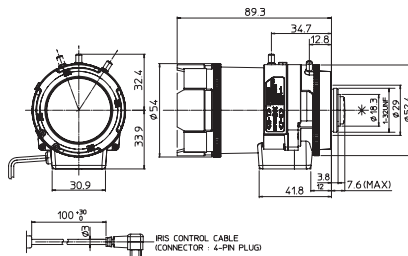
5MP

DV4x12.5SR4A-SA1

Applicable camera (model) 1 2/3 1/1.8 1/2 1/3 1/4

4 x

Applicable to 1/1.8



Unit : mm

Day Night

Fuji HD 5MP

- Vari-Focal
- Long Focal
- DC Auto Iris
- C Mount
- Metal Mount
- ND Filter
- Long Cable
- Aspherical Lens
- Large Aperture Ratio
- RoHS Compliant

\* This product is also available in manual iris type.

Focal Length (mm)	12.5 - 50 (4x)		
Iris Range	F1.6 - T360		
Operation	Zoom Manual		
	Focus Manual		
Angle of View (H x V)	Iris	Auto (DC type)*1	
	1/1.8"	WIDE	32° 54' x 24° 37'
		TELE	8° 14' x 6° 13'
	1/2"	WIDE	29° 32' x 22° 7'
		TELE	7° 26' x 5° 36'
	1/3"	WIDE	22° 7' x 16° 34'
		TELE	5° 36' x 4° 12'
	1/4"	WIDE	-
TELE		-	
Angle of View (H x V)	1/1.8"	WIDE	35° 52' x 20° 6'
	1/2"	WIDE	8° 57' x 5° 5'
		TELE	32° 12' x 18° 3'
	1/3"	WIDE	8° 4' x 4° 35'
TELE		24° 6' x 13° 32'	
Aspect Ratio 16:9	1/3"	WIDE	6° 5' x 3° 27'
	1/4"	TELE	-
Focus Range (From the Lens Front) (m)	∞ - 0.8		
Mass (g)	175		

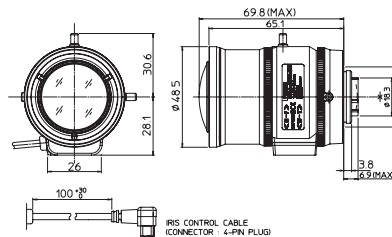
3MP

DV3.8x4SR4A-SA1

Applicable camera (model) 1 2/3 1/1.8 1/2 1/3 1/4

3.8 x

Applicable to 1/1.8



Unit : mm

Day Night

Fuji HD 3MP

- Vari-Focal
- Wide Angle
- DC Auto Iris
- C Mount
- Metal Mount
- ND Filter
- Long Cable
- Aspherical Lens
- Large Aperture Ratio
- RoHS Compliant

\* This product is also available in manual iris type.

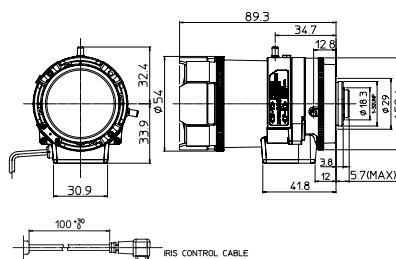
Focal Length (mm)	4 - 15.2 (3.8x)		
Iris Range	F1.5 - T360		
Operation	Zoom Manual		
	Focus Manual		
Angle of View (H x V)	Iris	Auto (DC type)*1	
	1/1.8"	WIDE	103° 27' x 77° 03'
		TELE	27° 23' x 20° 34'
	1/2"	WIDE	92° 42' x 69° 08'
		TELE	24° 38' x 18° 29'
	1/3"	WIDE	69° 08' x 51° 40'
		TELE	18° 29' x 13° 53'
	1/4"	WIDE	51° 40' x 38° 41'
TELE		13° 53' x 10° 25'	
Angle of View (H x V)	1/1.8"	WIDE	113° 02' x 62° 46'
	1/2"	WIDE	29° 48' x 16° 49'
		TELE	101° 14' x 56° 21'
	1/3"	WIDE	26° 49' x 15° 07'
TELE		75° 25' x 42° 09'	
Aspect Ratio 16:9	1/3"	WIDE	20° 08' x 11° 21'
	1/4"	WIDE	56° 21' x 31° 34'
Focus Range (From the Lens Front) (m)	∞ - 0.3		
Mass (g)	120		

DV10x8SR4A-SA1

Applicable camera (model) 1 2/3 1/2 1/3 1/4

10 x

Applicable to 1/2



Unit : mm

Day Night

Fuji HD 3MP

- Vari-Focal
- Long Focal
- DC Auto Iris
- C Mount
- Metal Mount
- ND Filter
- Long Cable
- Aspherical Lens
- Large Aperture Ratio
- RoHS Compliant

\* This product is also available in manual iris type.

Focal Length (mm)	8 - 80 (10x)		
Iris Range	F1.6 - T360 (Equivalent to F360)		
Operation	Zoom Manual		
	Focus Manual		
Angle of View (H x V)	Iris	Auto (DC type)*1	
	1/1.8"	WIDE	-
		TELE	-
	1/2"	WIDE	44° 33' x 34° 58'
		TELE	4° 42' x 3° 32'
	1/3"	WIDE	34° 58' x 26° 35'
		TELE	3° 32' x 2° 39'
	1/4"	WIDE	22° 40' x 17° 06'
TELE		2° 22' x 1° 47'	
Angle of View (H x V)	1/1.8"	WIDE	-
	1/2"	WIDE	49° 39' x 29° 10'
		TELE	5° 07' x 2° 53'
	1/3"	WIDE	38° 16' x 22° 05'
TELE		3° 50' x 2° 09'	
Aspect Ratio 16:9	1/4"	WIDE	24° 42' x 14° 03'
	TELE	2° 35' x 1° 27'	
Focus Range (From the Lens Front) (m)	∞ - 1.5		
Mass (g)	180		

\* 1 : The iris automatically closes when the camera is turned off. \* 2 : Angle of view values for the 1/2.7 model.

\* Each of the above products is also available in long cable type (230 mm).