

MAXPRO® NVR SE (Standard Edition)

32-CHANNEL NETWORK VIDEO RECORDER (NVR)

Honeywell's MAXPRO® NVR SE is an open, flexible and scalable IP video surveillance system. Utilising Honeywell's high definition cameras, MAXPRO NVR SE is a powerful, high definition IP recording system and viewing client for small to medium sized installations. MAXPRO NVR SE is an open platform and supports broad third party device integrations with support for standards—PSIA and ONVIF (including Profile-S devices), real time streaming protocol (RTSP) standard and native device integrations including new 360° camera support. MAXPRO NVR SE provides easy to use desktop clients and mobile apps—MAXPRO® Mobile.

MAXPRO NVR SE comes pre-installed with all required software and is also pre-licensed for 32 channels. This, along with an easy 3-Click wizard to live video for auto configuration, makes installing an IP system quick and efficient without requiring any IT expertise. Simple and logical configuration pages make setup a breeze even for the novice installer.

The MAXPRO NVR SE user interface is based on Honeywell's flagship MAXPRO® VMS user interface which offers a feature rich user experience and is common across the MAXPRO NVR Family. Utilisation of this familiar interface allows for the "learn one, know them all" concept that allows for familiarity across a broad range of Honeywell products.

MAXPRO NVR SE supports simultaneous recording, search, and system management for up to 32 IP cameras including high definition formats. Multiple MAXPRO NVRs can be deployed for system expansion using a distributed architecture and integrated with the MAXPRO® Viewer multi-site software or MAXPRO® VMS enterprise video management system.

MAXPRO NVR SE utilises powerful processor and memory technology supporting multiple simultaneous operations such as video recording and video viewing or alarm monitoring. End users can view live video while simultaneously performing searches. MAXPRO NVR SE also offers advanced features. Honeywell's patented Video Surround feature provides the ability to track subjects of interest as they move between areas covered by adjacent cameras by simply double-clicking on the panel where the subject is currently visible. Features such as the powerful calendar, preview search options and film strip view allow for rapidly searching video for scenes of interest and then quick export method transfers video to an authenticated video clip playable through Windows Media player.

Market Opportunities

The continual growth of IP networks and the demand for high definition video have led to the need for convergence of building security systems and IT systems for many companies across the globe. This has resulted in a strong demand for an all-IP end-to-end security system deployment. MAXPRO NVR SE provides an open, flexible and scalable system with operational power to address the needs of a wide variety of applications including education, commercial, retail, healthcare and many other applications. When the need is for an easy to install, simple to use, and feature rich network video recorder, the solution is MAXPRO NVR SE.



MAXPRO NVR SE
Rev B Server

HD



3-Clicks to Live Video



MAXPRO® NVR SE (Standard Edition)

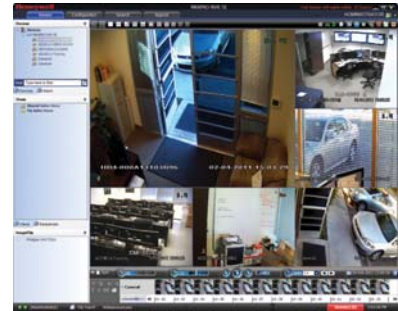
FEATURES

Software

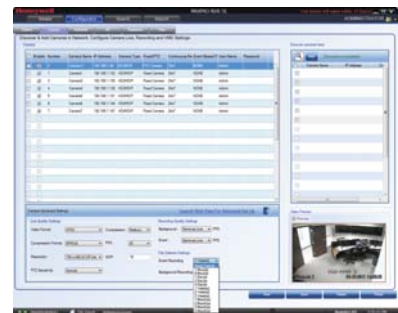
- MAXPRO NVR SE allows local or remote operations including live and recorded video monitoring, configuration and system management in a single desktop client interface.
- Support for mobile monitoring clients with MAXPRO Mobile apps.
- Broad device integrations: Honeywell cameras and encoders, third party devices with support for standards—PSIA and ONVIF (including Profile-S devices), RTSP standard and native device integration including new 360° camera support.
- Feature-rich, user-friendly Windows based interface to view HD video and configure system settings.
- Easy 3-click wizard to set up the system with auto-configuration and auto-discovery of IP cameras, recording and monitoring configuration—without any IP video expertise.
- Multi-zoom views on HD video. Example: Zoom in on a cash register in one view of the HD camera while at the same time monitoring the cash operator in the zoom out view of the HD camera.
- Ability to investigate events and alarms by simultaneously viewing alarm videos at various stages. For every alarm, users can view the video captured during pre-alarm, on-alarm, and post-alarm, and also view live video from the camera which triggered the alarm.
- Enriched video viewing experience through the intuitive video rendering engine that optimises CPU utilisation by altering the video frame rate.
- Honeywell's patented Video Surround feature simplifies the process of tracking subjects through a set of surrounding cameras.
- Create, save and name salvos under My Salvos or Shared Salvos.
- IP PTZ control and digital zoom on fixed cameras. 360° immersive viewing experience providing heightened situational awareness and increased video surveillance coverage.
- Fast search by date/time, time line, time jump, bookmarks, calendar, preview, film strip view and events. Increase productivity with more efficient search/investigation: Get to the relevant video in few clicks without having to review hours of recordings.
- Event history and operator log reporting with export in .pdf, Crystal Reports, Excel or Word.
- Capture and export clips and still images in simple .wmv and .bmp formats.
- Clips signed with digital signature for authentication.
- Supports multiple client connection to NVR Server.
- Separate event video and general recorded video retention times.
- Email notification on camera, system and operator events.
- Role-based operator privileges supporting Windows and local users.
- Flexible Motion detection (VMD) options with Server (Smart VMD) or Camera based motion events support. Reduced false alarms with object based motion detection analytics with Smart VMD.
- Keyboard control with UltraKey Plus and UltraKey Lite over Ethernet.
- Local and multi-language support.
- Multi-site support with MAXPRO Viewer.
- Integration with MAXPRO VMS.
- Integration with WIN-PAK® and Pro-Watch® Access Control Systems.

Hardware

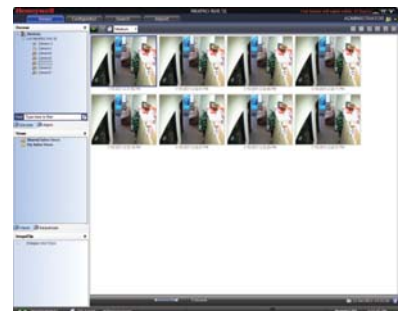
- Record and monitor up to 32 channels at 960 fps @ 4CIF/VGA or 960 fps @ 720p HD or 640 fps @ 1080p HD per MAXPRO NVR SE. Network bandwidth/throughput supported per NVR with Incoming: 120 Mbps, Outgoing: 120 Mbps providing a Total: 240 Mbps.
- Includes HDMI and DVI-I/VGA ports for dual monitor support
- MAXPRO NVR SE supports displaying 16 cameras at one time, greater numbers of cameras can be displayed by adding additional client workstations
- 6 removable bays with 1 operating system & storage hard drive and 5 storage only hard drives (optional 1 TB, 2 TB, 3 TB and 4TB drives)
- Internal storage capacity from 1 TB to 24 TB
- Includes dual 1 GB Network ports optimised to separate record and viewing data to ensure 100% recording and smooth playback even with multiple client connections
- 2U rack mount form factor with locking front bezel. Optional rack rails available for use with four post racking systems



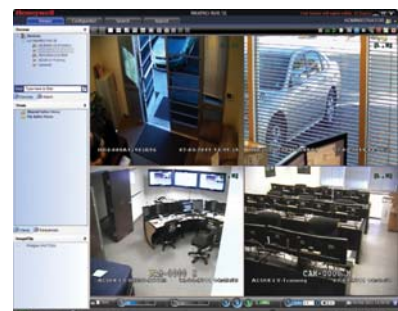
6 Split



Event Record



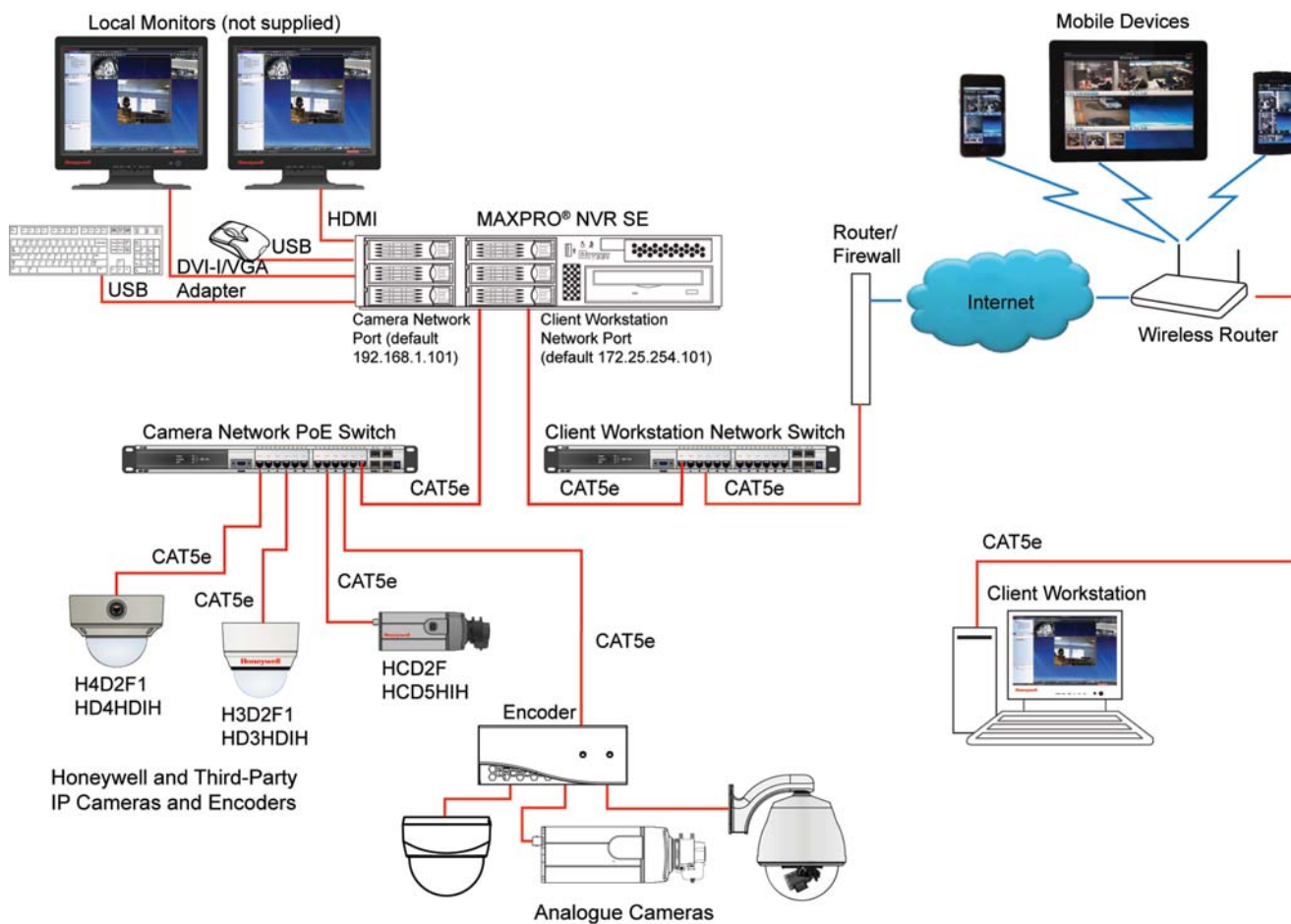
Preview



Quad

MAXPRO® NVR SE (Standard Edition)

SYSTEM DIAGRAM



MAXPRO® NVR SE (Standard Edition)

SPECIFICATIONS

Operational		Operational	
MAXPRO NVR SE Software - Version 2.5 or above		MAXPRO NVR SE Hardware	
Database	Microsoft SQL Express 2008 R2	Processor	Intel® Core™ i7-2600 3.4 GHz
Operating system	Windows 7 Embedded 64-bit, SP1	Memory	4 GB
Image compressions supported	MPEG-4, H.264	Power supply	Single 480 W
Supported Honeywell IP cameras and encoders	Supports Performance Series IP, EQUIP® Series cameras including high definition. Refer to www.honeywellsecurity.com/hota	OS Partition	100 GB partition in storage drive 1
Supported third party IP cameras and encoders	Refer to the Honeywell Open Technology Alliance for a comprehensive list of compatible products to which this device is integrated. www.honeywellsecurity.com/hota	Storage capacities	1 TB to 24 TB
Maximum number client connections	18 remote per unit from 9 remote workstations + 2 local on NVR server	Storage hard drive options	6 bays - 1 operating system & storage drive, 5 field-upgradable, 1, 2, 3 and 4 TB SATA hard drives
Salvo layouts	Full, 2x2, 1x5, 3x3, 2x8, 1x12, 4x4	Optical	22x DVD-RW
Picture controls per camera	Sharpness, blur, brightness, contrast, hue, saturation, maintain aspect ratio, stretched, original size and picture mirror	Network	Two 1 GB Ethernet included (10/100/1000 NIC Onboard + 2nd PCIe 10/100/1000 NIC included)
OSD	Concealed text option	Chassis with locking bezel	2U 6 bay
Playback controls per camera	FWD/REV Play x (1, 2, 4, 8, 16) Slow FWD/REV Play x (1/2, 1/4, 1/8)	Rear Panel Connections	
Search types	Time/date timeline, time jump FWD/REV, bookmarks, calendar, preview, film strip and event search	Mouse and keyboard	2x USB
Recording schedule	Constant and event based with H/M/D and holiday and exception days	USB	1x Front, 8x Back
Recording methods per camera	Constant, event based and user activated	Network	2x RJ45
Live settings per camera	Compression format, resolution and frame rate	Monitor output	1x DVI-I cw VGA adapter, 1x HDMI
Record settings per camera	Same as live or reduced frame rate	Electrical	
Clip format	WMV with digital certificate for authentication playable with Windows media player	Input voltage	110-240V ~ 50/60 Hz 7A
Video clip authentication	Digital signature, verification tool provided	Power consumption	Up to 480 W
Motion detection location	Camera based for supported models or Server based (Smart VMD) for all models(except 360 fisheye /panomorph views)	Mechanical	
Event recording	Pre and post duration setting	Construction	Housing: Steel chassis Finish: Black matte paint
Operator reporting	Per user, configurator, session and viewer	Dimensions (L x W x H)	27.0" x 19.0" x 3.5" 686 mm x 483 mm x 89 mm
Event report	Per camera or recorder events	Weight	Unit: 30 lbs (12.7kg) to 35 lbs (15.9kg) Shipping: 46 lbs (20.8kg) to 51 lbs (23.1kg)
Operators	10	Environmental	
		Temperature	Operating: 5°C to 40°C (40°F to 104°F) Storage: -10°C to 65°C (14°F to 150°F)
		Relative Humidity	0% - 90%, non-condensing
		Regulatory	
		Emissions	EMC (2004/108/EC) EN55022:2010 EN50130-4:1995 + A1:1998 + A2:2003 EN61000-3-2:2006 + A1:2009 + A2:2009 EN61000-3-3:2008
		Safety	LVD (2006/95/EC-LVD) EN 60950-1:2006 + A11:2009 + A1:2010 + A12:2011 UL 60950-1 & IEC 60950-1:2005 2nd Edition
		Warranty	
		Warranty and Advanced Replacements	Refer to http://www.honeywellvideo.com/support/warranty/index.html
Recording and Monitoring Performance		960 fps @ 4CIF/VGA or 960 fps @ 720p HD or 640 fps @ 1080p HD. Network bandwidth/throughput - Incoming: 120 Mbps, Outgoing: 120 Mbps, Total: 240 Mbps	
Max Video Streams Support		Live - 160 streams, Playback/Video retrieval sessions - 32, Sync playback - 9 streams	
Server based VMD (Smart VMD) performance - channels supported		Channels at max fps: 32 ch at 960 fps @ 4CIF/VGA or 32 ch at 960 fps @ 720p or 16 ch at 640 fps @ 1080p. All Channels at fps: 32 ch at 960 fps @ 4CIF/VGA or 960 fps @ 720p or 320 fps @ 1080p. Note: Local client - 2x2 view for 1080p and 4x4 view for all other lower resolutions.	

MAXPRO® NVR SE (Standard Edition)

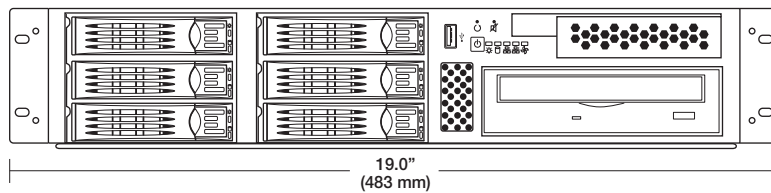
SPECIFICATIONS

MAXPRO NVR Client Only Workstation – Minimum Specifications	
Processor	Intel® Core™ 2 Duo Processor E6750 2.66 GHz or Quad Core Intel® Xeon® E5405 2.0 GHz
System Memory (RAM)	Minimum 4 GB or Higher
OS & Application – Hard Disk Drive or Partition	Minimum 100 GB Partition drive or separate hard drive
Graphics Adapter	512 MB or higher Display Card for Dual Monitor – DirectX 9 Compatible
Network Interface	Minimum – 1 Gigabit network interface card
Optical Drive	DVD-RW
Monitor Resolution	Video resolution 1280x1024 pixels, 32 bit
Keyboard/Mouse	102-key keyboard and mouse
Operating System Options	Microsoft® Windows 7 Professional SP1 (32-bit and 64-bit), Microsoft® Windows Server 2008 R2 SP1

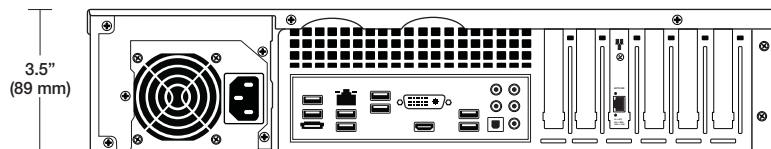
Note: The minimum specifications above are recommended for systems with fixed or PTZ cameras only. For systems with multiple 360 cameras using full immersive experience with dewarping and playback requires superior workstation specifications than above.

SYSTEM DIMENSIONS

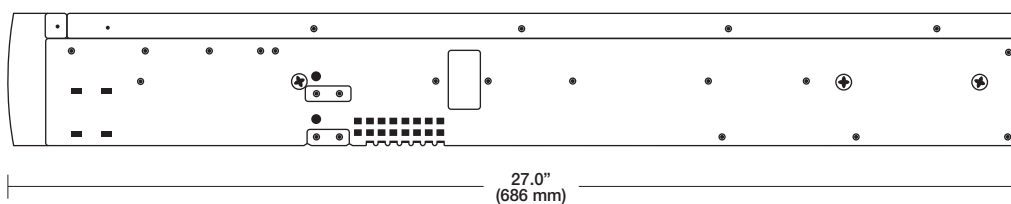
Front View



Rear View



Side View



MAXPRO® NVR SE (Standard Edition)

ORDERING

Ordering	
HNMSE16BP01TX	MaxNVR SE, 16 channels, 1TB storage, Performance Package
HNMSE16BP02TX	MaxNVR SE, 16 channels, 2TB storage, Performance Package
HNMSE16BP04TX	MaxNVR SE, 16 channels, 4TB storage, Performance Package
HNMSE16BP08TX	MaxNVR SE, 16 channels, 8TB storage, Performance Package
HNMSE16BP12TX	MaxNVR SE, 16 channels, 12TB storage, Performance Package
HNMSE16BP18TX	MaxNVR SE, 16 channels, 18TB storage, Performance Package
HNMSE16BP24TX	MaxNVR SE, 16 channels, 24TB storage, Performance Package

HNMSE32BP02TX	MaxNVR SE, 32 channels, 2TB storage, Performance Package
HNMSE32BP04TX	MaxNVR SE, 32 channels, 4TB storage, Performance Package
HNMSE32BP08TX	MaxNVR SE, 32 channels, 8TB storage, Performance Package
HNMSE32BP12TX	MaxNVR SE, 32 channels, 12TB storage, Performance Package
HNMSE32BP18TX	MaxNVR SE, 32 channels, 18TB storage, Performance Package
HNMSE32BP24TX	MaxNVR SE, 32 channels, 24TB storage, Performance Package

HNMSE16BP08R5X	MAXPRO NVR SE, 8TB RAID5 storage, 16 channels, Performance Package
HNMSE16BP10R5X	MAXPRO NVR SE, 10TB RAID5 storage, 16 channels, Performance Package
HNMSE16BP18R5X	MAXPRO NVR SE, 18TB RAID5 storage, 16 channels, Performance Package
HNMSE16BP24R5X	MAXPRO NVR SE, 24TB RAID5 storage, 16 channels, Performance Package
HNMSE32BP08R5X	MAXPRO NVR SE, 8TB RAID5 storage, 32 channels, Performance Package
HNMSE32BP10R5X	MAXPRO NVR SE, 10TB RAID5 storage, 32 channels, Performance Package
HNMSE32BP18R5X	MAXPRO NVR SE, 18TB RAID5 storage, 32 channels, Performance Package
HNMSE32BP24R5X	MAXPRO NVR SE, 24TB RAID5 storage, 32 channels, Performance Package

Accessories

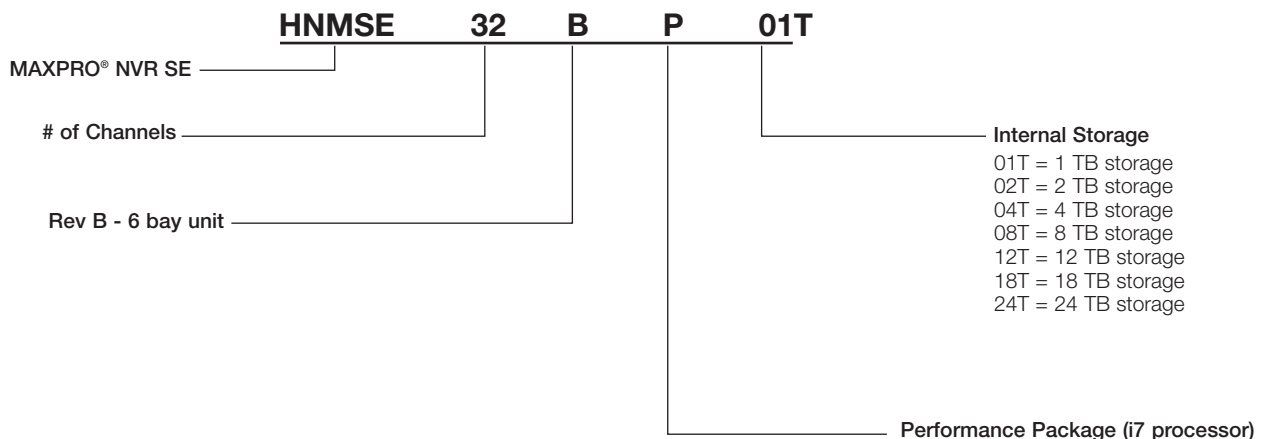
HNMSEBHD1T	1 TB HDD MAXPRO NVR SE, Rev B Server
HNMSEBHD2T	2 TB HDD, MAXPRO NVR SE, Rev B Server
HNMSEBHD3T	3 TB HDD, MAXPRO NVR SE, Rev B Server
HNMSEBHD4TR	4 TB HDD, MAXPRO NVR SE, Rev B Server

MAXPRO NVR SE - Part Number Lookup

xxT	xxT = non RAID Storage
	xxR5 = RAID5 storage
X	X=PAL unit

Refer to the storage calculator to help determine what size unit to order.

NOTE: Honeywell reserves the right, without notification, to make changes in product design or specifications.



For additional information, please visit www.honeywell.com/security/uk

Honeywell Security Group
 Aston Fields Road
 Whitehouse Industrial Estate
 Runcorn
 Cheshire
 WA7 3DL
 Tel: +44 (0)1928 754 028
www.honeywell.com

HVS-MXPRNVRSE-02(0613)DS-E
 June 2013
 © 2013 Honeywell International Inc.

Honeywell