

FSM

Fire Monitoring System



Manual V.5.02.BF

Installation

Summary

BEFORE INSTALLATION START	3
INTRODUCTION.....	4
MINIMUM SYSTEM REQUIREMENTS.....	4
INSTALLATION	4
FSM SERVER INSTALLATION.....	5
START FSM SERVER SERVICE	9
FSM CLIENT INSTALLATION	10
INSTALLATION VERIFICATION	13

Legend



TIP: Indicates what is recommended to do

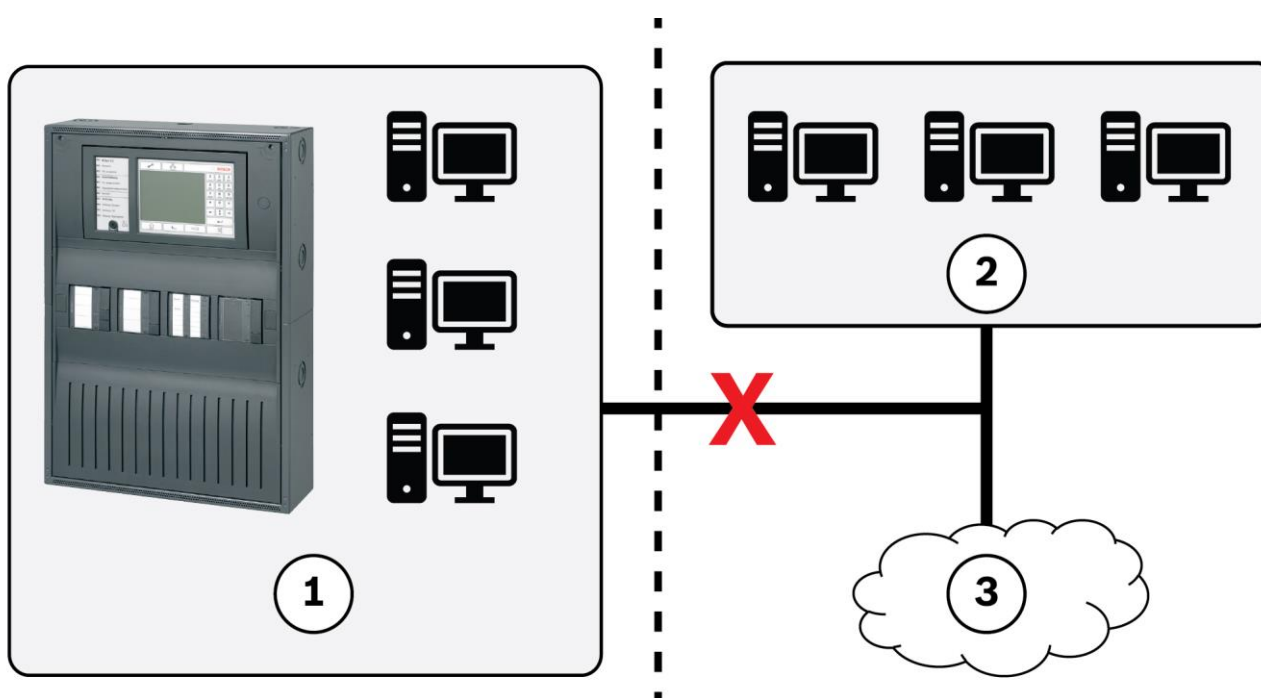


NOTE: indicates additional information or clarification



WARNING: indicates actions essential for a proper functioning of the system

Before installation start



An exclusive Ethernet network in order to set up a central fire alarm network (1) is required. For security and reliability reasons, no networks used for any other purpose (2) may be part of this special network environment.

The Fire Monitoring System has to be part of this exclusive fire alarm Ethernet network without direct access to the Internet (3). If an internet connection is established to receive the Fire Monitoring System license, this internet connection must be removed before the fire alarm network is put into operation. Only recommended accessories may be used.

Introduction

The FSM is a centralized client server platform with a multi-monitor maps graphical user interface, easy to install, to setup and to maintain.

Minimum System Requirements

The computer that will run Security Control must be dedicated specifically to the use of such software, and it must have the following minimum requirements:

- Operating system: Windows 7, Windows 8, Windows 10
- Dual-core processor with a frequency of 1.8GHz or higher
- At least 2 GB of RAM
- At least 1 GB free hard disk space for the software
- A network card 100 Mbps
- Monitor with a resolution of at least 1366x768 pixels

Installation

For installation you need the following files:

- | | |
|--------------------------------|--------------------------------------|
| 1) FSM_Server_5_0_x_yyyy_setup | FSM Server installation file |
| 2) FSM_Client_5_0_x_yyyy_setup | FSM Control Client installation file |

In file name letters x and y represent the build version of software.

To install FSM, please proceed as follows:

1. Configure OPC node in FPA RPS software
2. Install the software FSM Server
3. Enter the License key
 - a. Server PC connected to internet: direct activation
 - b. No local internet connection:
 - i. generate of a license file from the server PC
 - ii. upload this file to the license release web portal
 - iii. upload the outcome from the web portal on the server PC
4. Start the server service
5. Installation of the FSM Client



In order to install the software you must have administrator rights on your computer

FSM Server Installation

Launch the installation of Security Control Server by double-clicking the Setup.exe file in the archive server.

After a few seconds you will see the window of Fig. X01.

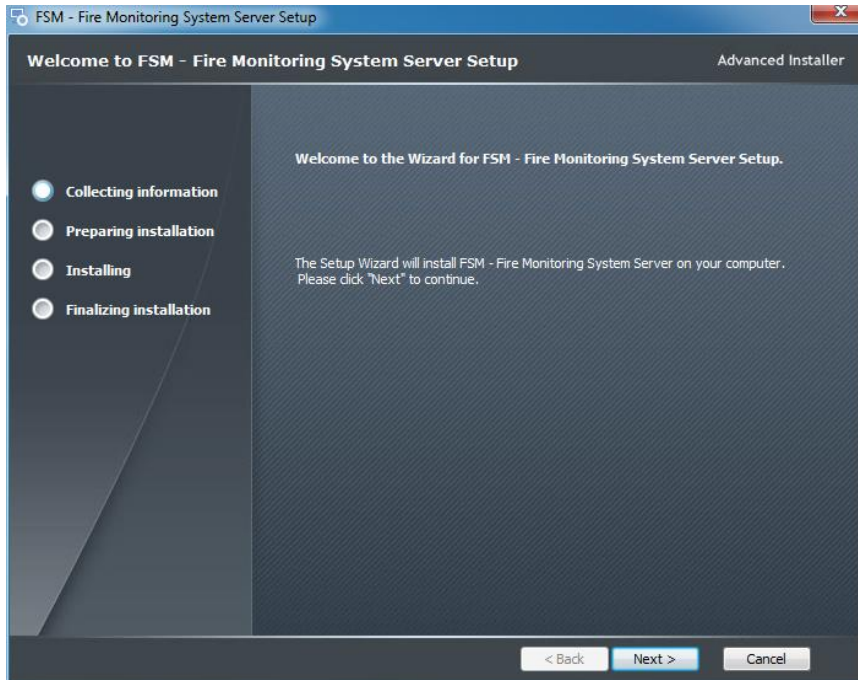


Fig. X01 - Installing FSM Server - start page

Press the Next button.



For maintenance reasons it is recommended to use the default folder

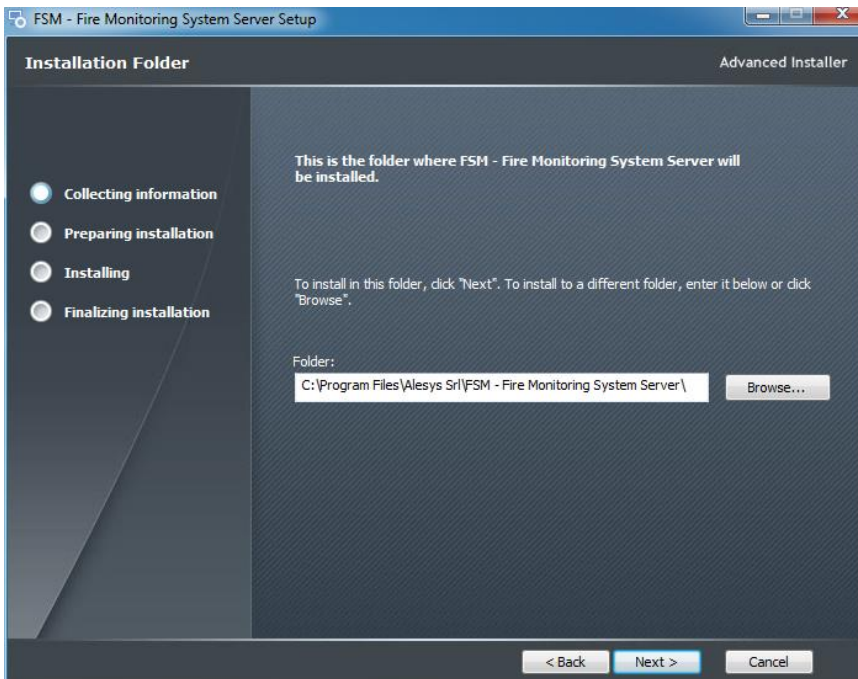


Fig. X02 - Select the location where the software shall be installed

Once selected the folder press next.

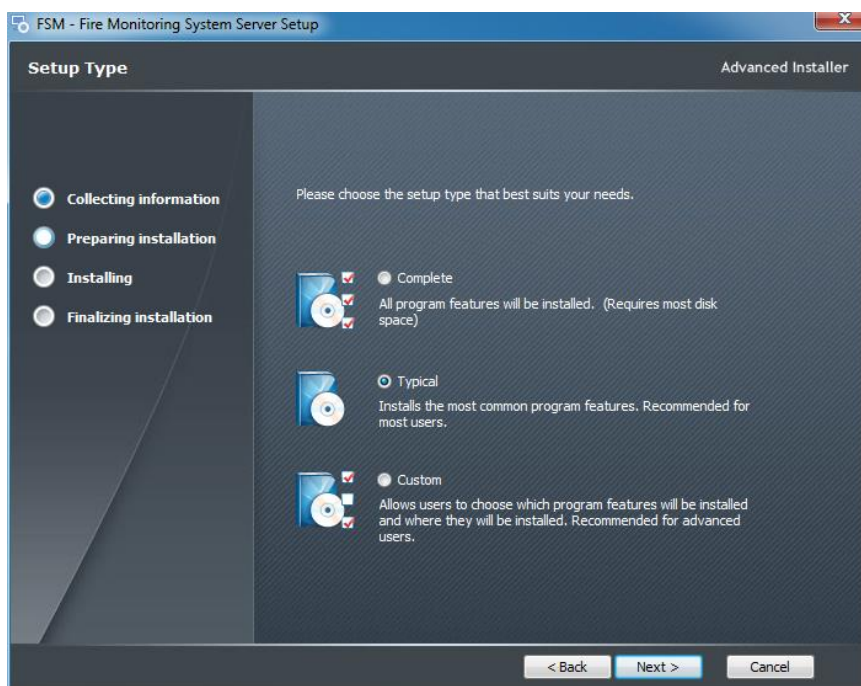


Fig. X03 - Select the type of installation you want to execute.

If Security Control is installed on your computer for the first time, select Complete or Typical and click next: the prerequisites for proper function of the software will be automatically installed.

If the prerequisites are already installed (e.g. when upgrading the server), you can proceed with the installation of only the FSM selecting Custom and press Next. The window shown in Fig.X04 opens.

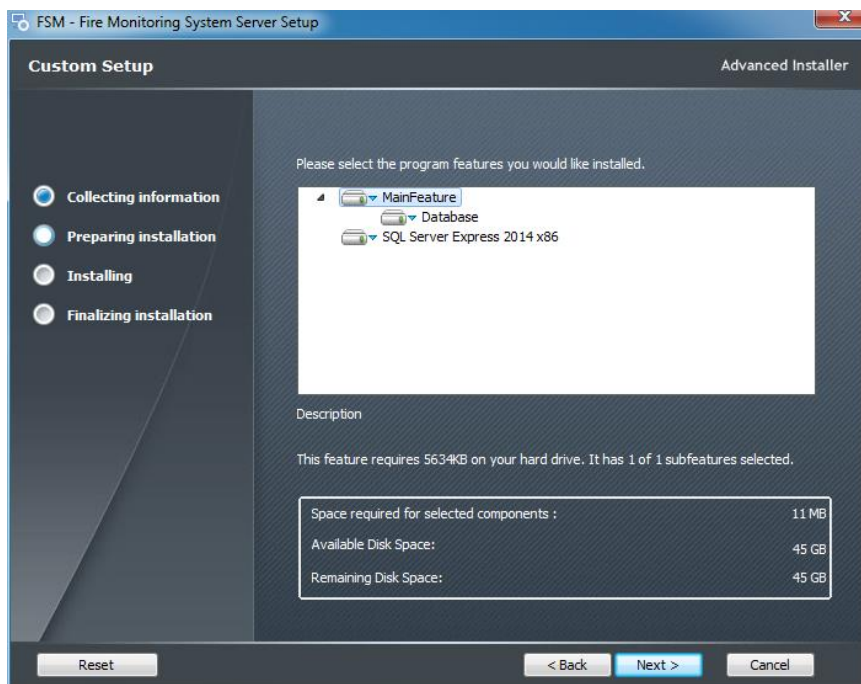


Fig. X04 - Installing FSM Server – custom installation

To deselect SQL Server Express click with the mouse on the blue triangle next to the name and select the item. The feature will not be installed.

When upgrading leave selected the "Database", which will update the database to the current version.

To confirm you selection click "Next".

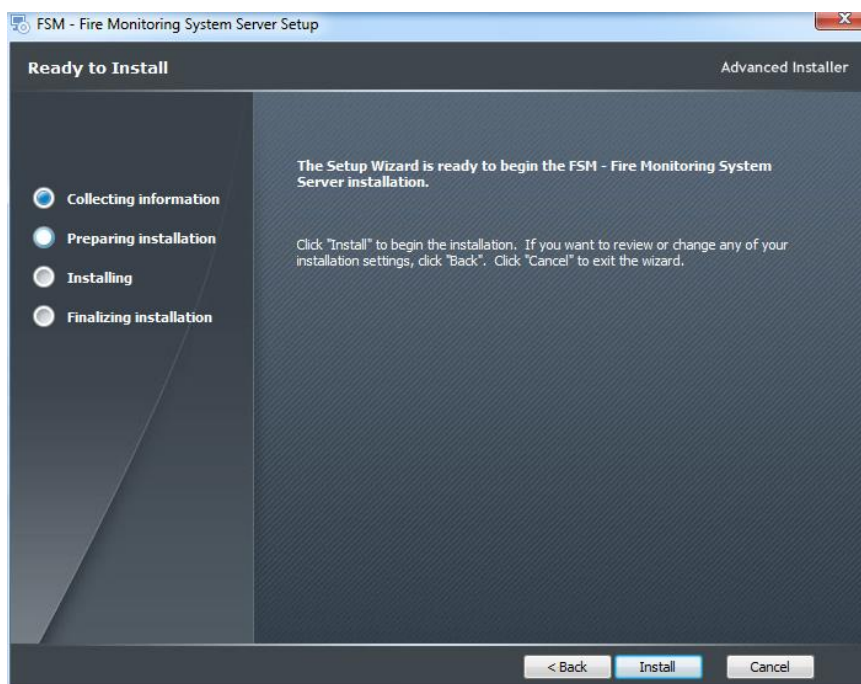


Fig. X05 - Installing FSM – start installation

Click "Install" to start the installation of the software".



The installation time varies depending on the selected features. If you have chosen to install the SQL server, the procedure may need one or more computer restarts. Before launching the installation it is recommended to close all open applications.

During the installation a green bar indicates the progress.

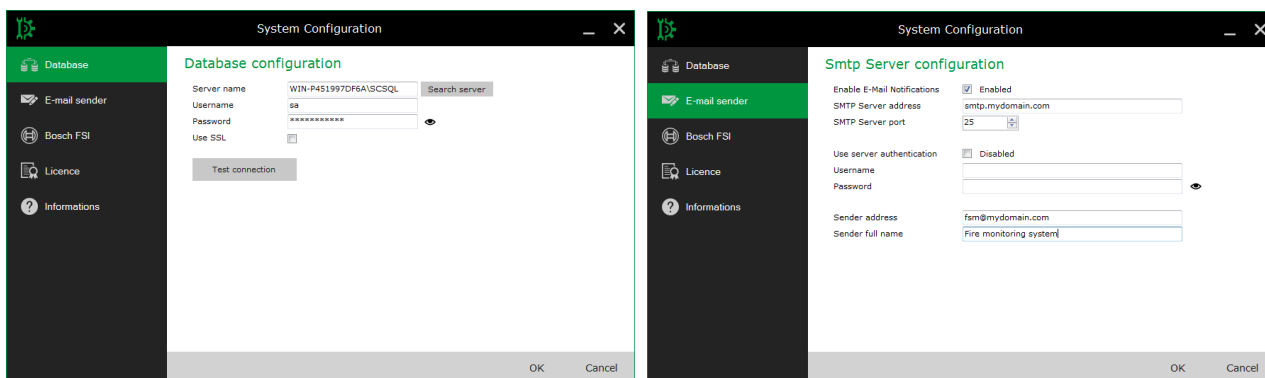


Fig. X07 - Installing Security Control Server - settings

The parameters in the tab "Database" are generated automatically by the installation program and are to be changed only on the advice of technical support.

Configure the SMTP server in the "Email sender" tab filling up all the required information released from the email provider.

Enter the parameters in the Bosch FSI configuration tab.

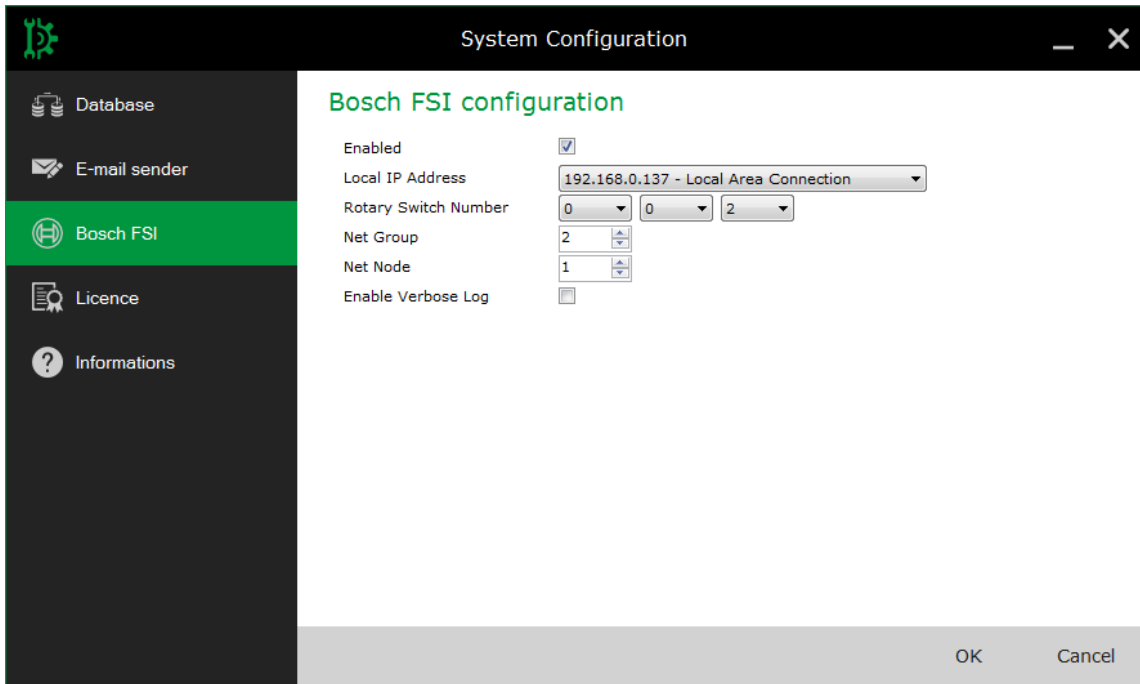


Fig. X08 – FSI Parameter Configuration

Parameters in “Bosch FSI” tab are used to configure the FSM node in FPA panel networks. Fill “Rotary Switch Number”, “Net Group” and “Net Node” according to the configuration defined in RPS. In local IP address choose the network board connected to FPA Panel networks. Local IP address must be the same as defined in RPS.

License Activation:

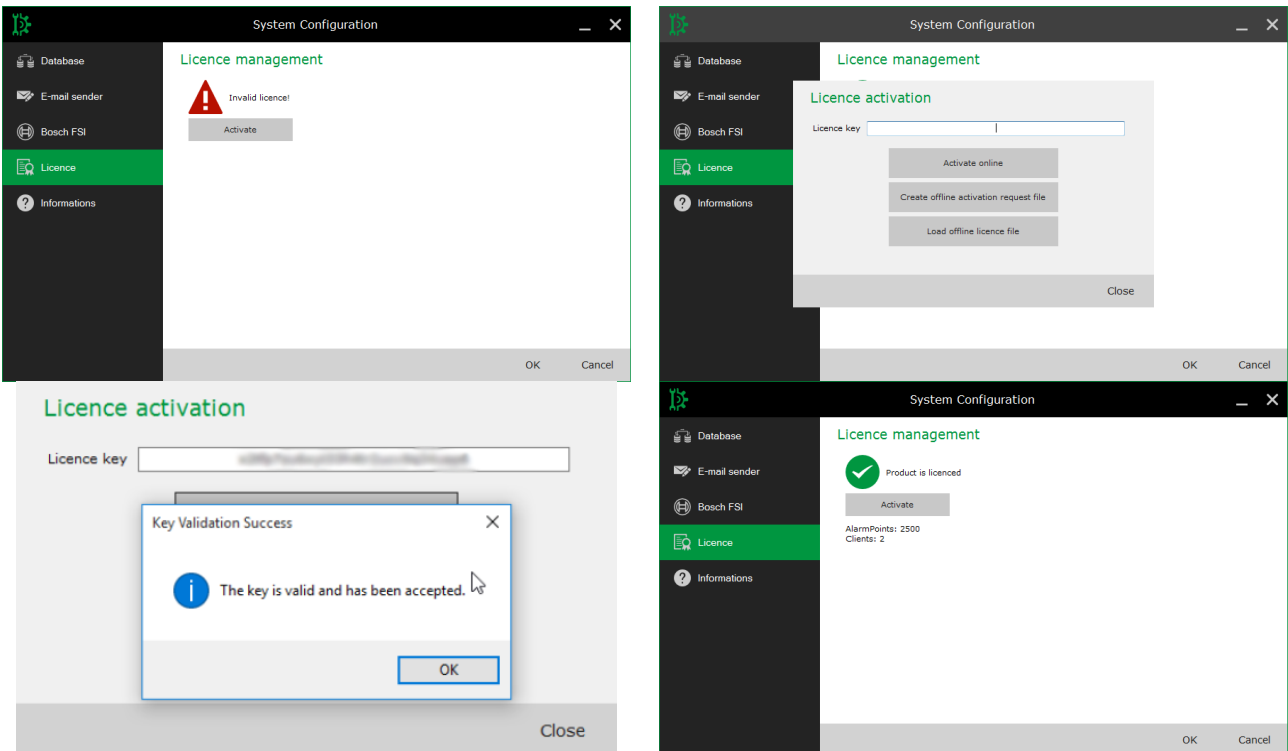


Fig. X09 - Installing Security Control Server - settings

In the tab “License” press Activate and enter the “License Key” received:

1. In case the Server PC has an internet connection: press the “Activate online” button to activate the server.



If an internet connection is established to activate the Fire Monitoring System license, this internet connection must be removed before the fire alarm network is put into operation.

2. In case the Server PC doesn't have an internet connection:
 - a. click "Generate offline activation request file" to generate an xml-file which can be uploaded to the activation web portal.
 - b. upload the file to the “offline activation” section of the activation web portal: <https://activation.alesys.it/InstallKeyWeb/ManualValidationPage.aspx>
 - c. download and save the generated “license key file”.
 - d. select “Load offline license file” and upload the “license key file” received from the offline activation web portal.
3. The panel will show the enabled resources.
4. For license update or upgrade use the same procedure.



If an internet connection is established to receive the Fire Monitoring System license, this internet connection must be removed before the fire alarm network is put into operation.

Start FSM server service

The Security Control Server is installed as a Windows service (application that runs in the background without operator intervention, regardless of the user session in progress) and launched automatically when the system starts operating.

To check the status, select Control Panel → Administrative Tools → Services and select the service Security Control Server (see Fig.X10).

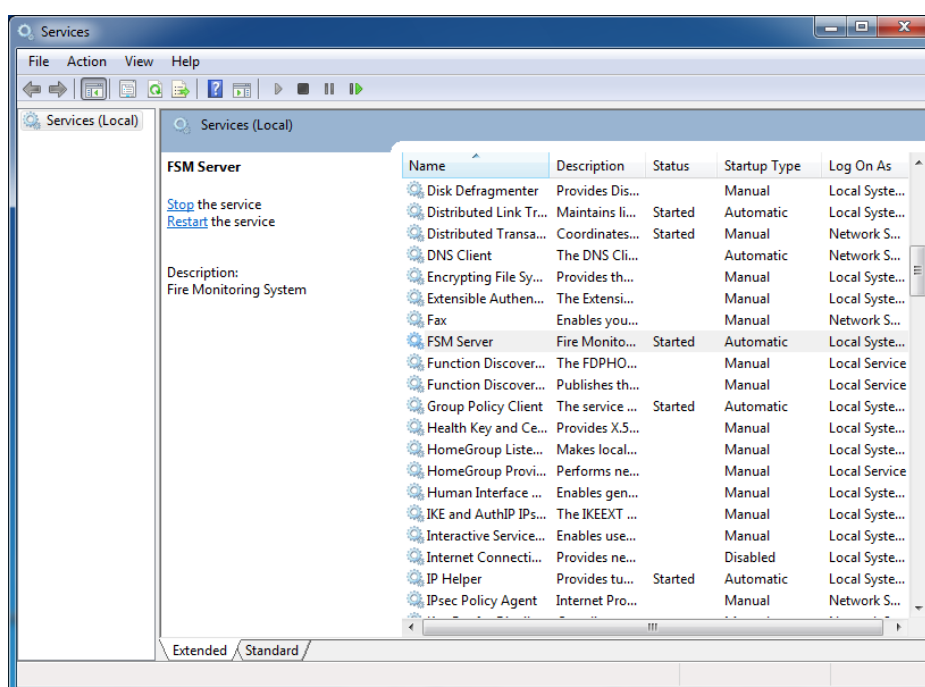


Fig. X10 – Security Control Server Verification

In case of regular running, the Status column will show the string Started.
Try to start the service manually by pressing the Play button in the toolbar.



If during the service start-up errors occur, Windows informs about the impossibility to start the service: in this case contact the technical support.

FSM Client Installation

Check in Control Panel Services of Windows that the Security Control service is running. Launch the installation of Security Control Client by double-clicking the FSM_Client_5_0_x_yyyy_setup.exe file in the archive of the client.

After a few seconds you will see the window with the installation prerequisites.

First the installation software checks the availability of necessary software, i.e.

- Microsoft DirectX 9
- Microsoft .NET Framework 4.5
- Microsoft .NET Framework 3.5.1

If the software is already present (for PCs running Windows 7, Windows 8, Windows 10 or a previous installation of the software) installation will proceed directly with the first installation window (fig. X09), otherwise the installation will start automatically the necessary forms.

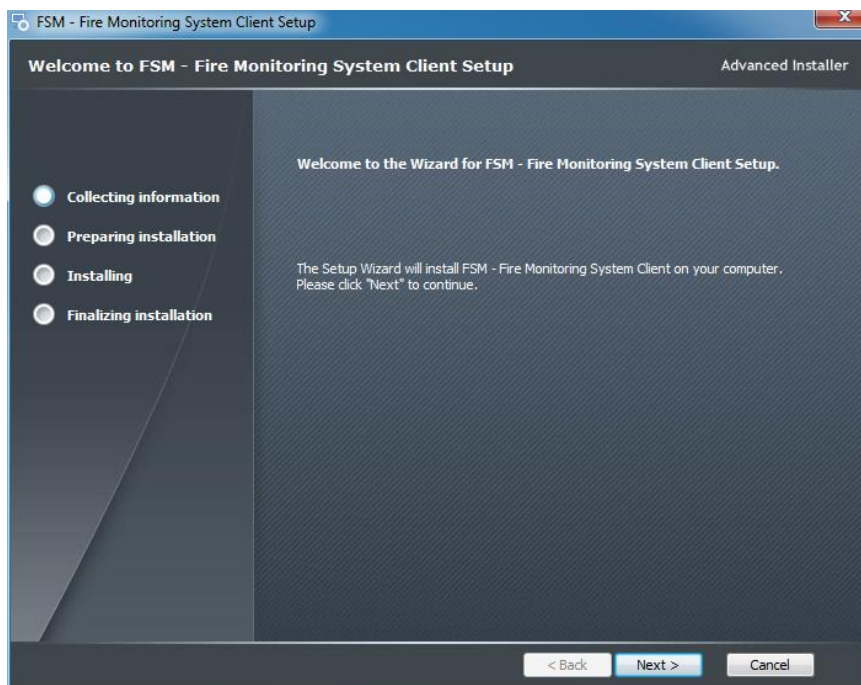


Fig. X11 - Installing FSM Client - start procedure

Press the Next button and select the location where the software shall be installed (fig. X12).



For maintenance reasons it is recommended to use the default folder

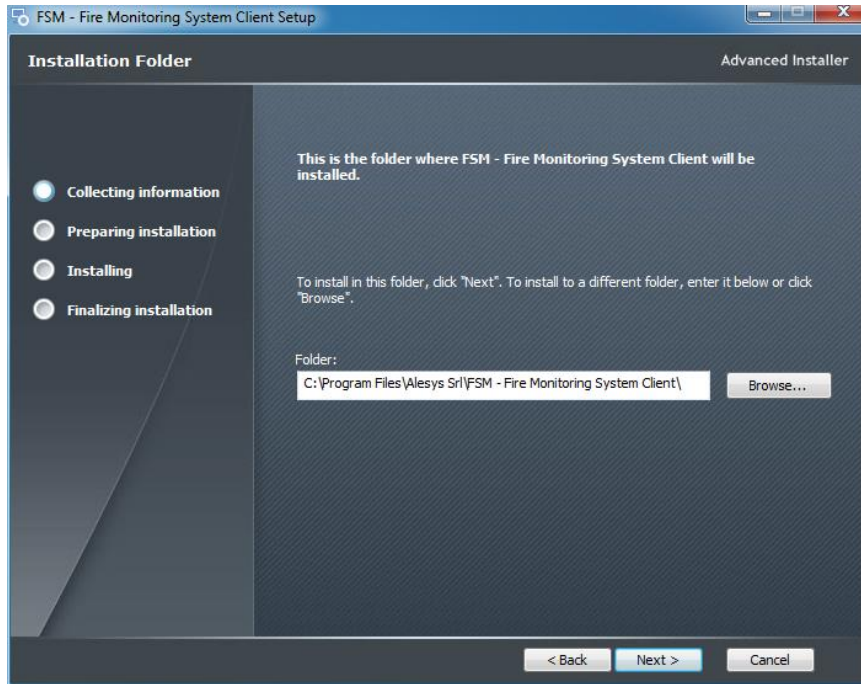


Fig. X12 - Installing FSM Client – installation folder

Click next to start the installation process.

In the following window (Fig. X13), press the Install button to start the installation process.

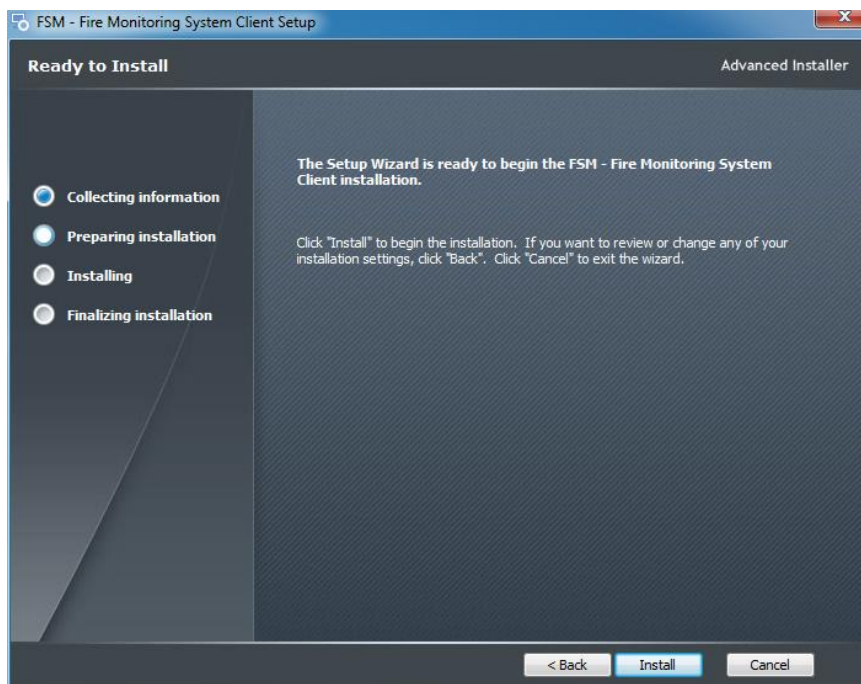


Fig. X13 - Installing FSM Client – start installation

During the installation in the installation window a green bar indicates the progress.

At the completion of the installation procedure the connection between the Client and the Server is tested (Fig. X14).

Set the IP address of the computer where the Security Control Server is installed (if Server and Client are installed on the same machine you can also use the standard address localhost or 127.0.0.1).

Press the test button and wait for the result of the test (Figure X14):

- In case of success you can complete the installation of the client
- In case of failure check the status of the server before repeating the operation

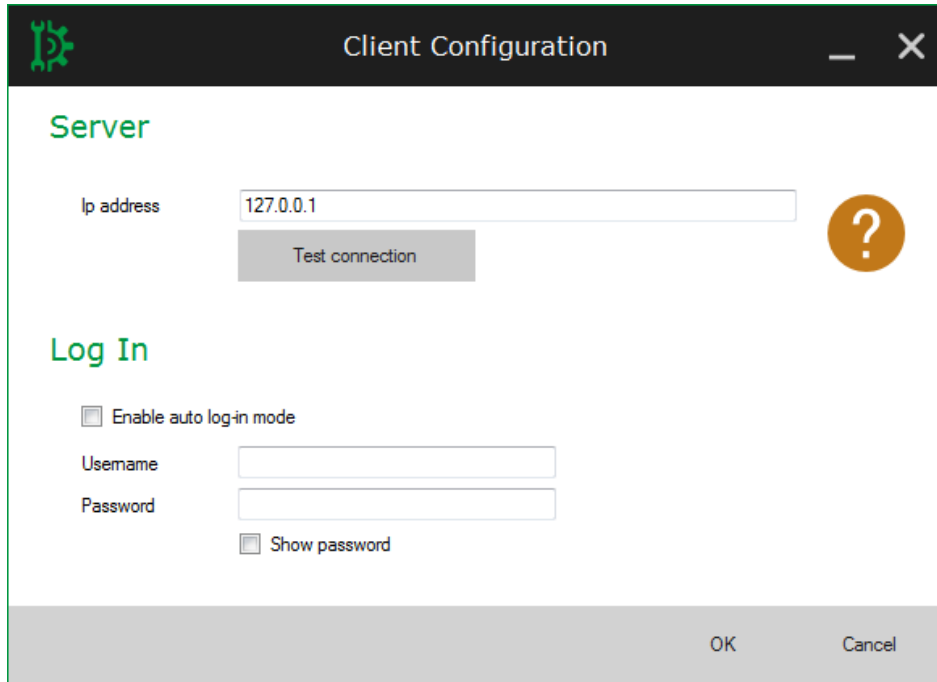


Fig. X14 - Installing FSM Client – Client-Server connection test

Press the OK button to continue.

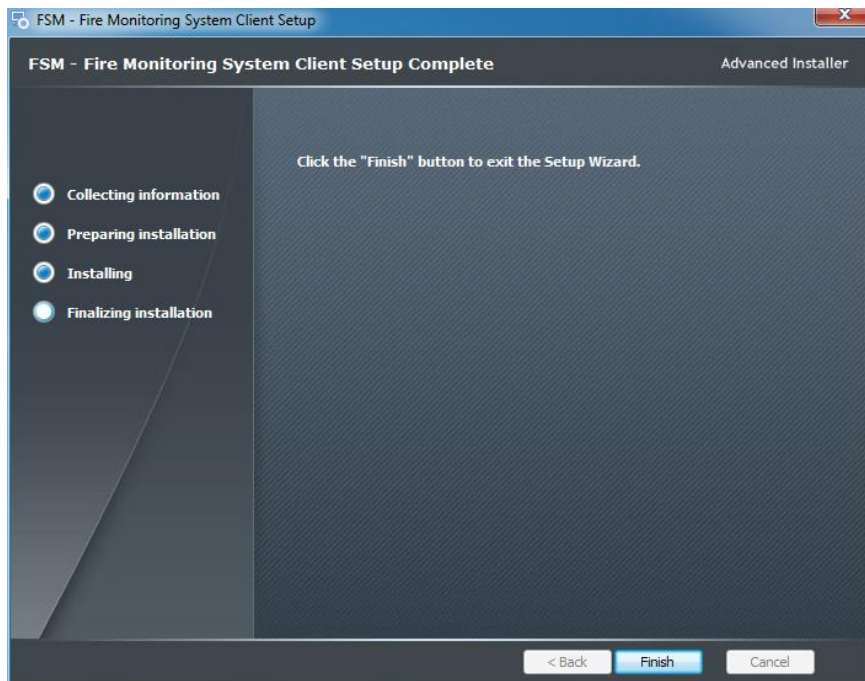


Fig. X14 - Installing FSM Client – end installation

Press Finish to complete the installation and proceed with the verification.

Installation verification

To check the result of the installation (for both the Server and the Client), launch the Client by selecting from the menu of programs Security Control Client → Security Control Client, or by the link present on the desktop:



The correct display of the login window reports the success of the installation, Fig. X15. The default user for login after first installation is “Administrator” with password “admin”.



Fig. X15: Login Window

FIG. X16 instead shows the warning window displayed in the event of incorrect operation of the system:

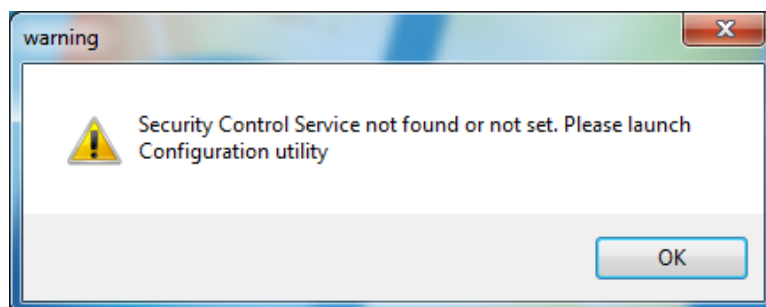


Fig. X16: Warning Window

1. Verify that Security Control Server is started.
2. Check the status of the connection Server - Client using the Client Configuration Tool utility in the menu of programs Security Control Client, entering the IP address of the PC where you installed the server and pressing the Test.



In case of error during the verifications of the items 1 or 2, contact the technical support.



Alesys Srl

+39 0331 21 94 36 – www.alesys.it
via p. reginaldo giuliani, 539
21044 Cavaria con Premezzo Va